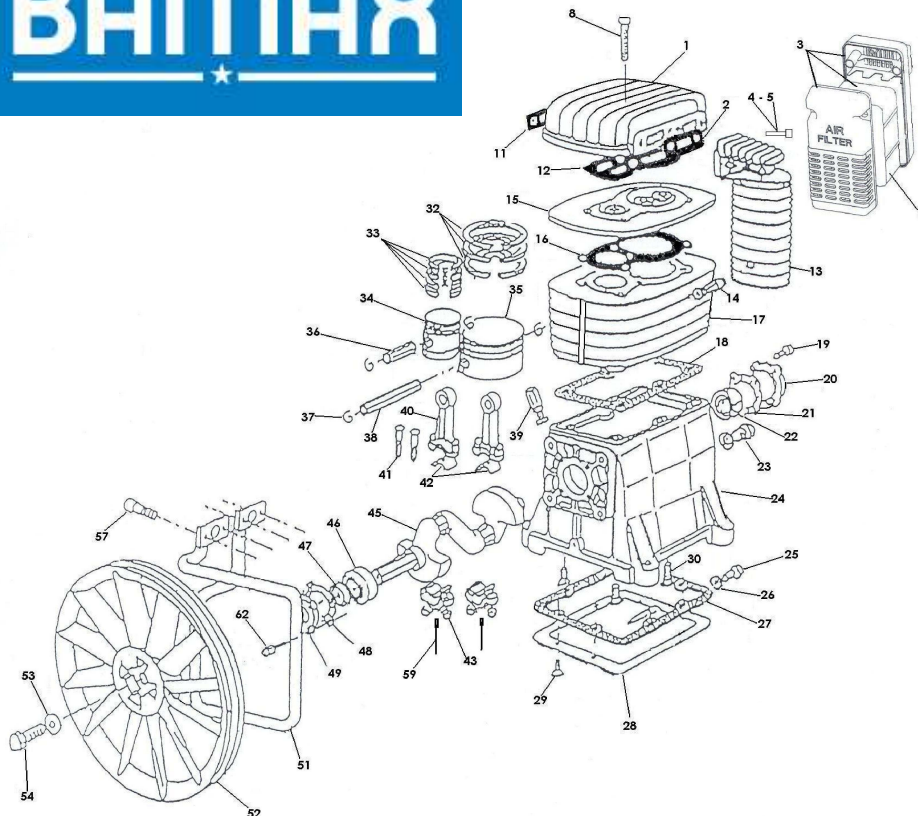


# BAMAX

# BX59



| REF. NBR. | PART NUMBER | DESCRIPTION                 | DESCRIZIONE                             | UNITS PER ASSY |
|-----------|-------------|-----------------------------|---|----------------|
| 1         | 55893689    | CYLINDER HEAD               | TESTATA                                 | 1              |
| 2         | 97018352    | GASKET AFTERCOOLER-HEAD     | GUARNIZIONE COLLETTORE-TESTATA          | 1              |
| 3         | 55898936    | AIR FILTER COMPLETE         | FILTRO ARIA COMPLETO                    | 1              |
| 4 / 5     | 97019277    | SCREW M10X50                | VITE M10X50                             | 4              |
| 6         | 55898928    | AIR FILTER ELEMENT          | CARTUCCIA FILTRO                        | 1              |
| 8         | 55889711    | SCREW M10X60                | VITE M10X60                             | 6              |
| 11        | 97018725    | GASKET INTERCOOLER-HEAD     | GUARNIZIONE TUBO RAFFREDDAMENTO-TESTATA | 2              |
| 12        | 55893515    | GASKET VALVE PLATE-HEAD     | GUARNIZIONE PIASTRA VALVOLE-TESTATA     | 1              |
| 13        | 97018345    | AFTERCOOLER                 | COLLETTORE                              | 1              |
| 14        | 97018360    | SAFETY VALVE                | VALVOLA DI SICUREZZA                    | 1              |
| 15        | 55893630    | ASSY VALVE PLATE            | PIASTRA VALVOLE COMPLETA                | 1              |
| 16        | 55893523    | GASKET VALVE PLATE-CYLINDER | GUARNIZIONE PIASTRA VALVOLE-CILINDRO    | 1              |
| 17        | 97510812    | CYLINDER                    | CILINDRO                                | 1              |
| 18        | 97018683    | GASKET CRANKCASE-CYLINDER   | GUARNIZIONE CARTER-CILINDRO             | 1              |
| 19        | 97019319    | SCREW M6X16                 | VITE M6X16                              | 8              |
| 20        | 92062777    | CRANKCASE COVER LOV         | COPERCHIO LOV                           | 1              |
| 21 / 48   | 97018717    | GASKET CRANKCASE COVER      | GUARNIZIONE COPERCHI LV-LOV             | 2              |
| 22 / 46   | 92500630    | BEARING 6206                | CUSCINETTO 6206                         | 2              |
| 23        | 97019590    | OIL LEVEL SIGHT GLASS       | SPIA LIVELLO OLIO                       | 1              |
| 24        | 97508204    | CRANKCASE                   | CARTER                                  | 1              |
| 25        | 97019210    | SCREW M10X20                | VITE M10X20                             | 1              |
| 26        | 97019426    | WASHER OIL DRAIN            | RONDELLA VITE SCARICO OLIO              | 1              |
| 27        | 97507107    | GASKET SUMP PLATE           | GUARNIZIONE FONDO CARTER                | 1              |
| 28        | 55899702    | SUMP PLATE                  | FONDO CARTER                            | 1              |
| 29        | 97251573    | SCREW TT5X15                | VITE TT5X15                             | 12             |
| 30        | 97019335    | SCREW M10X25                | VITE M10X25                             | 6              |
| 32        | 97232318    | SET RING L.P.               | SET SEGMENTI B.P.                       | 1              |
| 33        | 97232326    | SET RING H.P. SET           | SEGMENTI A.P.                           | 1              |
| 34        | 97511521    | PISTON H.P.                 | PISTONE A.P.                            | 1              |
| 35        | 97511513    | PISTON L.P.                 | PISTONE B.P.                            | 1              |
| 36        | 97018519    | WRIST PIN H.P.              | SPINOTTO PER PISTONE A.P.               | 1              |
| 37        | 97018550    | CIRCLIP                     | ANELLO SEEGER                           | 4              |
| 38        | 97018576    | WRIST PIN L.P.              | SPINOTTO PER PISTONE B.P.               | 1              |
| 39        | 97232193    | OIL FILLER BREATHER         | TAPPO CARICA OLIO                       | 1              |
| 40        | 97019913    | CONNECTING ROD              | BIELLA                                  | 2              |
| 41        | 92391440    | SCREW M8X45                 | VITE M8X45                              | 4              |
| 42        | 97018444    | SHELL BEARING               | SEMIGUSCI                               | 4              |
| 43        | 97019459    | NUT SELF LOCKING            | DADO AUTOBLOCCANTE M8                   | 4              |
| 45        | 97019541    | CRANKSHAFT                  | ALBERO A GOMITO                         | 1              |
| 47        | 97019368    | OIL SEAL                    | ANELLO DI TENUTA                        | 1              |
| 49        | 97146401    | CRANKCASE COVER LV          | COPERCHIO LV                            | 1              |
| 51        | 55900159    | INTERCOOLER                 | TUBO DI RAFFREDDAMENTO                  | 1              |
| 52        | 97018337    | BELT WHEEL                  | VOLANO                                  | 1              |
| 53        | 97019152    | WASHER BELT WHEEL           | ROSETTA PER VOLANO                      | 1              |
| 54        | 97019129    | SCREW BELT WHEEL            | VITE PER VOLANO                         | 1              |
| 57        | 97019178    | SCREW M8X20                 | VITE M8X20                              | 4              |
| 59        | 97018139    | DIPPER PIN ASTINA           | SBATTIOLIO                              | 2              |