



13-25-546
Version: 00
September 6, 2018

L-SERIES
SINGLE STAGE
BASE-MOUNTED and TANK-MOUNTED
COMPRESSOR

GD PILOT

MODELS CL7-11D

10 and 15 HP

PARTS LIST

MAINTAIN COMPRESSOR RELIABILITY AND PERFORMANCE WITH GENUINE CHAMPION COMPRESSOR PARTS AND SUPPORT SERVICES

Champion® Compressor genuine parts, manufactured to design tolerances, are developed for optimum dependability . specifically for Champion compressor systems. Design and material innovations are the result of years of experience with hundreds of different compressor applications. Reliability in materials and quality assurance are incorporated in our genuine replacement parts.

Your authorized Champion Compressor distributor offers all the backup you need. A worldwide network of authorized distributors provides the finest product support in the air compressor industry.

Your authorized distributor can support your Champion air compressor with these services:

1. Trained parts specialists to assist you in selecting the correct replacement parts.
2. Repair and maintenance kits designed with the necessary parts to simplify servicing your compressor.

Authorized distributor service technicians are factory trained and skilled in compressor maintenance and repair. They are ready to respond and assist you by providing fast, expert maintenance and repair services.

To Contact Champion or locate your local distributor:

Visit: www.championpneumatic.com/contactus.aspx

Or

Call: (800)232-0865

INSTRUCTIONS FOR ORDERING REPAIR PARTS

When ordering parts, specify Compressor MODEL, HORSEPOWER and SERIAL NUMBER (see nameplate on unit). All orders for Parts should be placed with the nearest authorized distributor.

Order by part number and description. Reference numbers are for your convenience only.

**TOTAL PRODUCT SUPPORT – CHAMPION’S CONTINUING
COMMITMENT TO YOUR AIR COMPRESSOR PERFORMANCE**

Commitment to total product support continues long after the purchase of your quality Champion rotary screw compressor.

Champion original parts incorporate years of experience and improvements in design, materials and quality assurance. Maintaining your compressor investment with Champion parts will insure protection for the air compressor unit and long, dependable service life.

Your authorized Champion compressor distributor maintains a complete stock of all common maintenance parts, factory approved AEON lubricants, and Champion factory warranted exchange airends. In addition, authorized distributor technicians are factory trained, and can provide complete diagnostic, compressor maintenance and repair services.

This manual is designed to assist you in maintaining high performance and receiving many years of dependable service you expect from your Champion compressor.

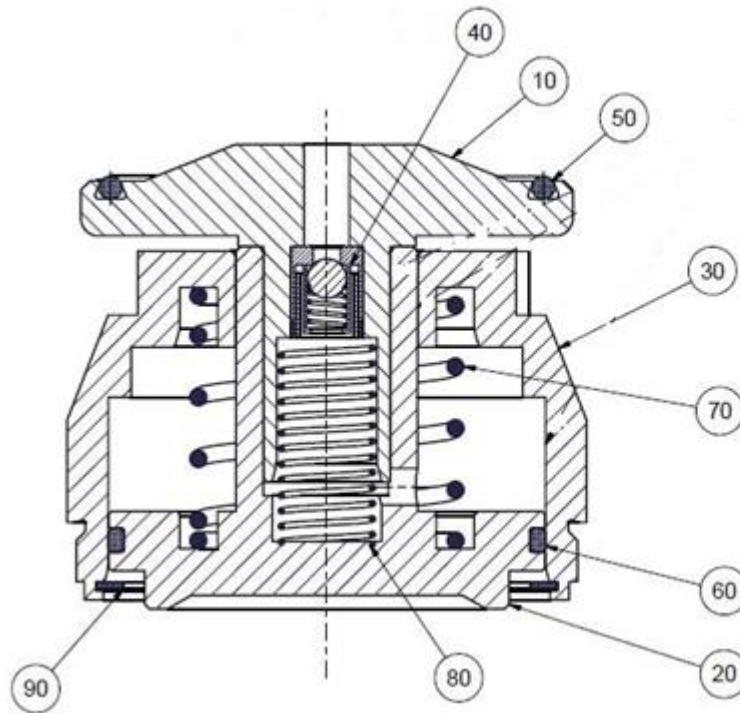
TABLE OF CONTENTS

TOTAL PRODUCT SUPPORT . CHAMPION'S CONTINUING COMMITMENT TO YOUR AIR COMPRESSOR PERFORMANCE	2
INLET VALVE.....	4 & 5
AIR END GROUP	6 & 7
PACKAGE SHEET METAL & HARDWARE	9 thru 13
DRIVE GROUP	14 & 15
COOLING GROUP	16 & 17
MOISTURE SEPARATOR (OPTIONAL)	18 & 19
ELECTRICAL BOX DOOR LAYOUT.....	20 & 21
CONTROLLER ASSEMBLY . 5HP . 208-230/460	22 & 23
CONTROLLER ASSEMBLY . 5HP . 380 & 575 VOLT.....	24 & 25
MANUAL TANK DRAIN	26 & 27
STANDARD TANK DRAIN	28 & 29
CALIFORNIA CODE TANK DRAIN.....	30 & 31
DRYER DRAIN PIPING.....	32 thru 35
TANK MOUNTED LESS DRYER . MOUNTING GROUP	36 & 37
TANK MOUNTED COMPRESSOR AND DRYER - (80, 120, & 240 GALLON)	38 thru 49
DECAL LAYOUT	50 thru 52
DRIVE SYSTEM HARDWARE	53
MAIN MOTOR.....	53
DRYER TYPE	54
REPAIR KITS.....	55 thru 57

For Operating and Service Instructions, see:

SERVICE MANUAL:	13-25-628
GD PILOT	ZS1054347

INLET VALVE



A11853074-01
(Ref. Drawing)

Order by Part Number and Description. Reference Numbers are for your convenience only

INLET VALVE

B/M: A11853074

Ref. No.	NAME	QTY.	PART NO.
10	NON RETURN PISTON.....	1	A11853274
20	PISTON.....	1	A11853374
30	CYLINDER.....	1	A11853474
40	NON RETURN VALVE	1	A07715741
50	O-RING	1	A93191210
60	O-RING	1	A93191590
70	COMPRESSION SPRING	1	A93300530
80	COMPRESSION SPRING	1	A93300510
90	SPRING RINGõ õ õ õ õ õ õ õ õ õ õ õ õ	1	A93148830

Order by Part Number and Description. Reference Numbers are for your convenience only

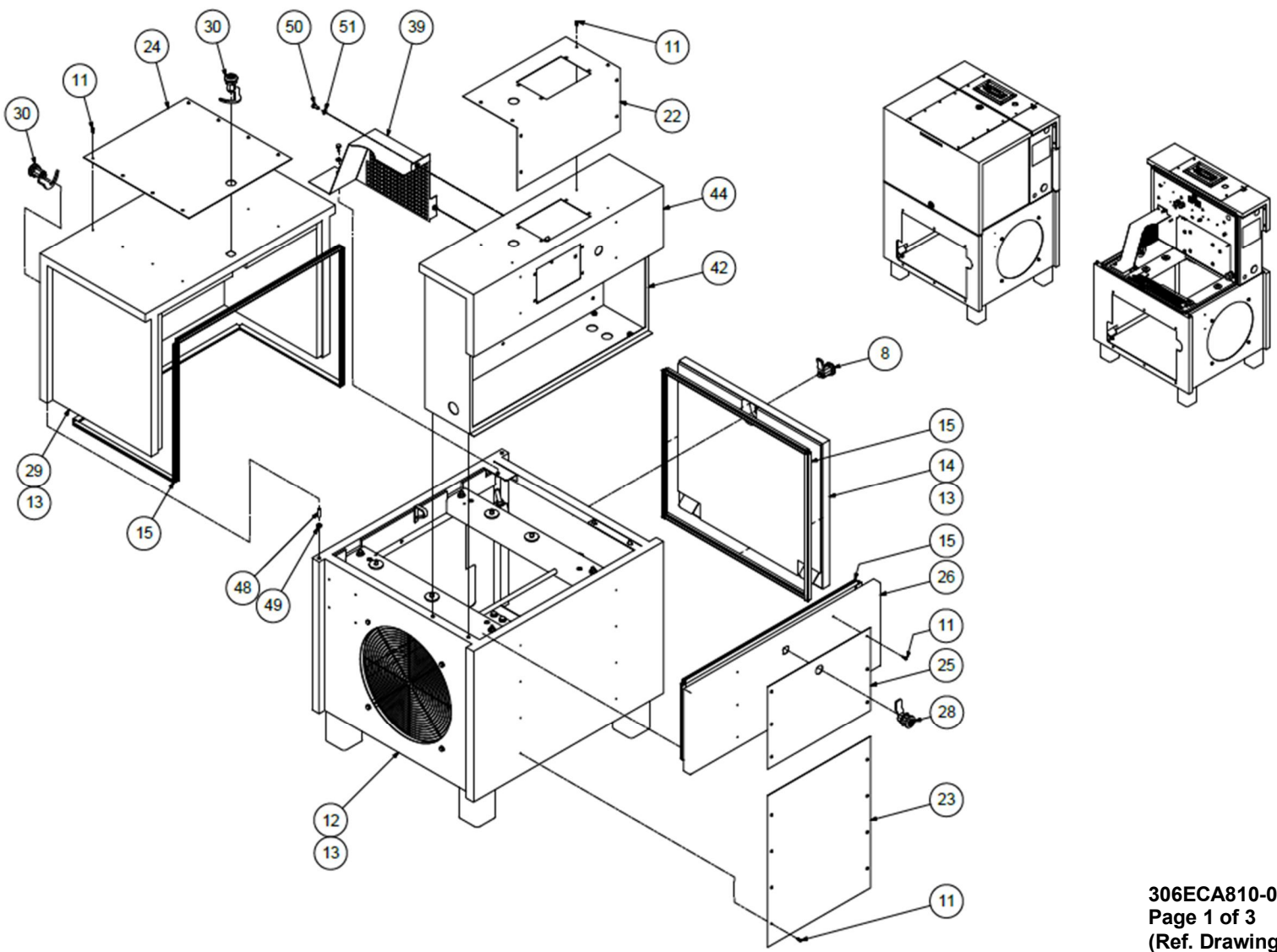
AIREND GROUP

**B/M: 300ECB4001
306ECB4023
305ECB4023**

Ref. No.	NAME	QTY.	PART NO.
1	AIREND EK76.....	1	A11850074
2	DOUBLE FITTING, OIL FILTER	1	ZS1060267
*3	INTAKE CONTROLLER(See pages 5 & 6)	1	A11853074
4	SOLENOID VALVE	1	100015591
5	SUCTION FLANGE	1	ZS1060580
6	DOUBLE FITTING, SEPARATOR	1	ZS1060268
7	PRESSURE SENSOR.....	2	ZS1050642
8	TEMPERATURE PROBE.....	1	100013684
**9	AIR/OIL SEPARATORδ	1	300KBA035
**10	OIL FILTERδ	1	300KBA1446
19	PRESSURE RELIEF VALVEδ δ δ δ δ δ δ δ δ δ δ δ δ δ δ δ	1	100003009
20	MINIMUM PRESSURE VALVE.....	1	ZS1046882
25	PIPE SEAL.....	1	A93191640
26	PIPE SEAL.....	1	A93191650
27	O-RING	1	A93191630
28	O-RING	1	A93191620
29	HOSE CLIP	1	A93610200
33	SILENCER	1	A13012774
34	ELBOW	2	A93581670
35	TUBING (In Meters).....	.133	A91801060
36	FITTING	2	A93580730
37	FITTING	1	A93580750
42	THERMOSTATIC VALVE.....	1	
	55D C.....δ δ δ δ δ δ δ δ δ δ δ δ δ δ δ δ		A11203274
	70D C.....δ δ δ δ δ δ δ δ δ δ δ δ δ δ δ δ		A11484474
43	PLASTIC HOSE (In Meters).....	0.2	A93643260
44	FITTING	2	A93601310
45	VALVE SEAT	1	A11852674
46	LOCKING SCREW	2	A11852774
47	SNAP RING	1	A93147360
48	INTERNAL RING	1	100002517
49	SHAFT SEALδ	1	A93220090
50	AIR FILTERδ	1	300KBA1445
51	OIL SAMPLING VALVE.....	1	86N345

* Parts Included in Inlet Valve Kit GM0711-1. Refer to Page 56.
** Parts Included in Compressor Warranty Kit 303KBA6032. Refer to Page 55

PACKAGE SHEET METAL & HARDWARE



13-25-546 Page 8

306ECA810-01
Page 1 of 3
(Ref. Drawing)

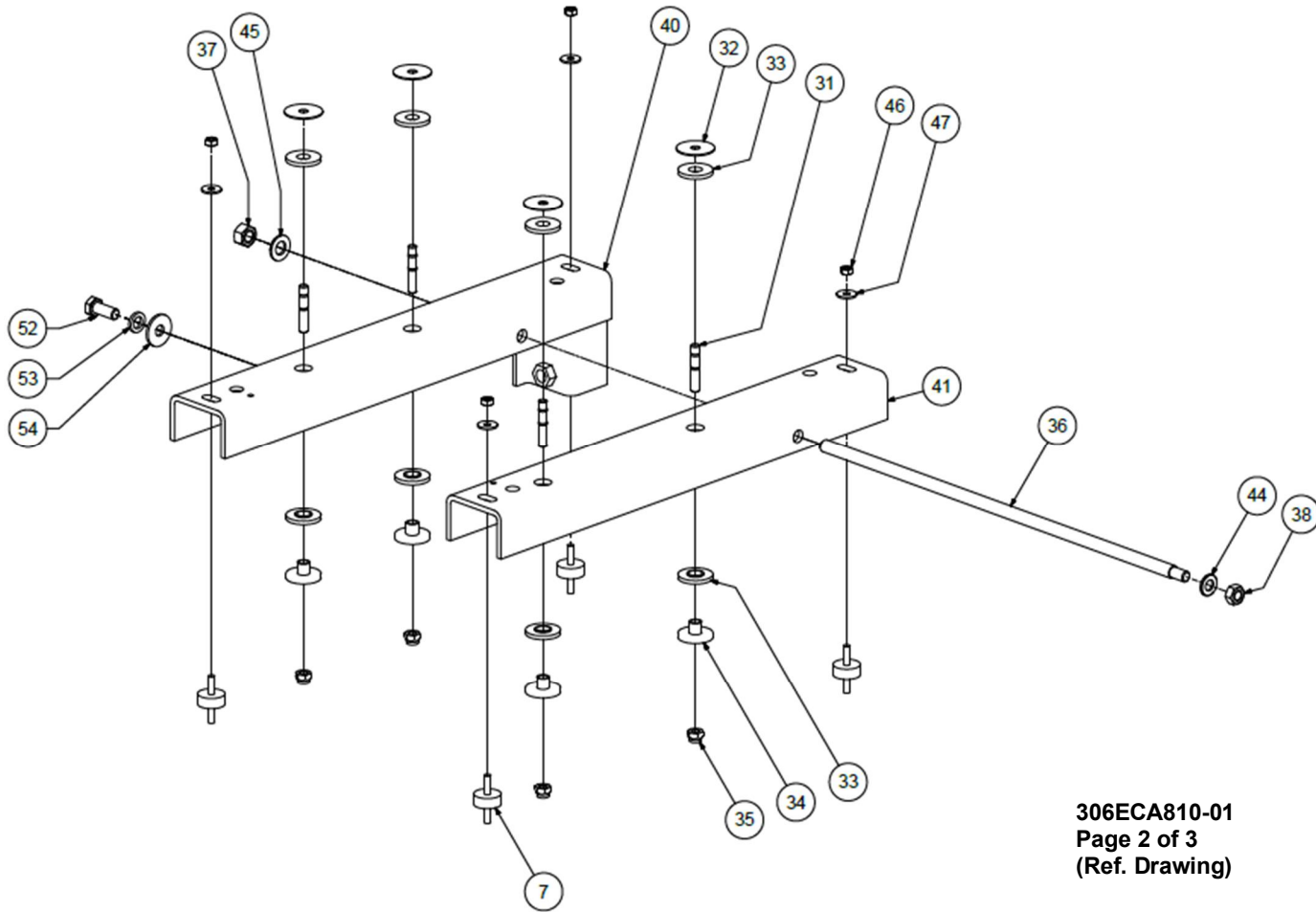
Order by Part Number and Description. Reference Numbers are for your convenience only.

PACKAGE SHEET METAL & HARDWARE

**B/M: 301ECA4013
 307ECA4013
 311ECA4023
 310ECA4023
 307ECB4023**

Ref. No.	NAME	QTY.	PART NO.
8	TURNBUCKLE	1	A11005874
11	SCREW.....	32	A93039260
12	CANOPY	1	ZS1127278
13	FOAM SET	1	TEN005769
14	PANEL DRIVE SIDE.....	1	ZS1053694
15	SEALING PROFILE (In Meters)	2.20	A93343660
22	DESIGN ELEMENT STARTER BOX COVER	1	TEN003394
23	DESIGN ELEMENT CANOPY	1	TEN003399
24	DESIGN ELEMENT HOOD.....	1	TEN003400
25	DESIGN ELEMENT ST.BOX DOOR.....	1	TEN003398
26	DOOR STARTER BOX.....	1	ZS1127406
28	FASTENER	1	100015110
29	HOOD	1	TEN005762
30	FASTENER	2	100015109
39	BELT GUARD.....	1	ZS1053718
42	STARTER BOX	1	ZS1053690
44	STARTER BOX PANEL.....	1	ZS1127405
48	SCREW.....	2	95001-229
49	WASHER	4	A10308-10
50	SCREW.....	2	A93014560
51	DISK.....	2	A93139270

PACKAGE SHEET METAL & HARDWARE



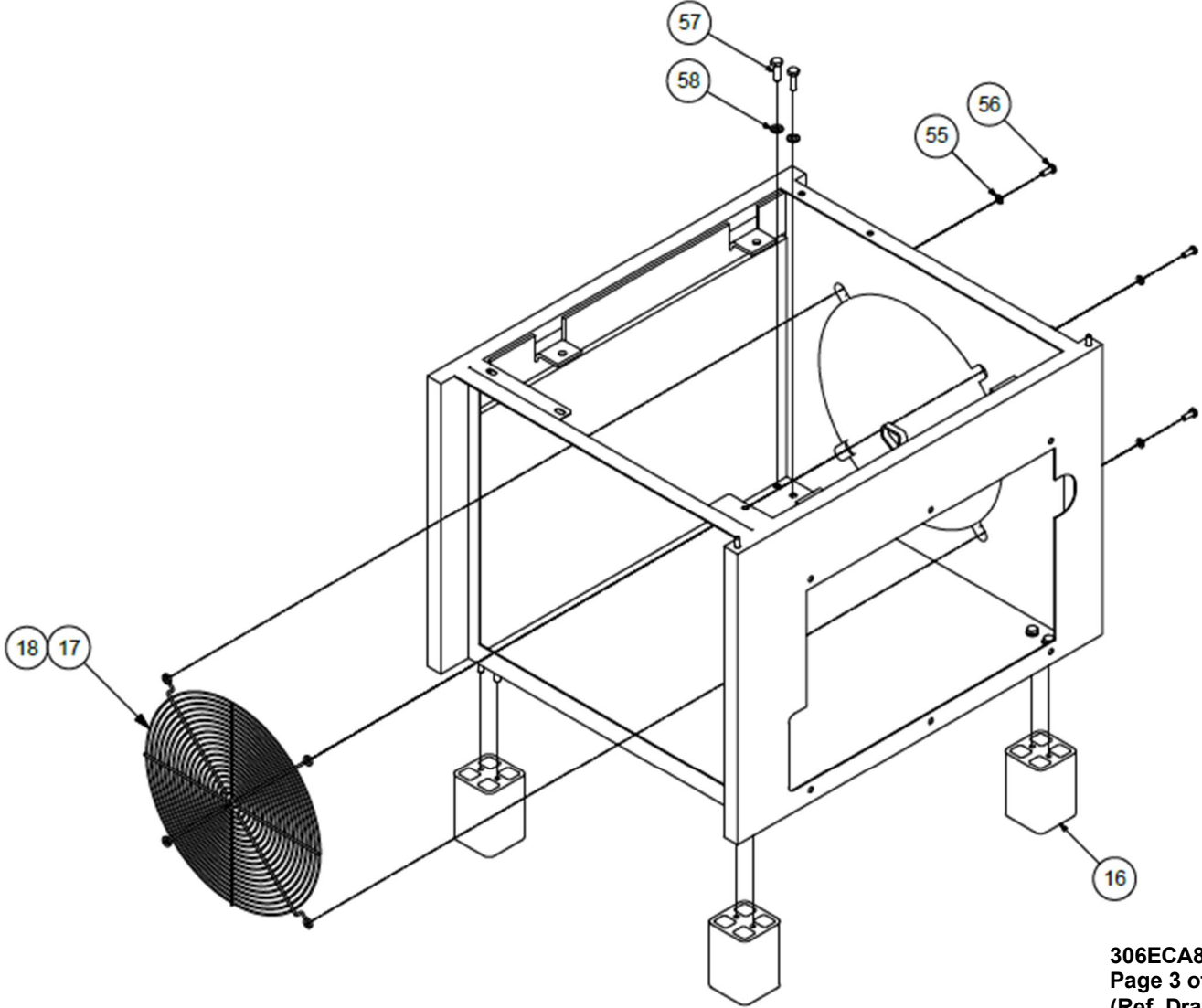
Order by Part Number and Description. Reference Numbers are for your convenience only.

PACKAGE SHEET METAL & HARDWARE

B/M: 307ECA4013
301ECA4013
310ECA4023

Ref. No.	NAME	QTY.	PART NO.
7	RUBBER METAL BUFFER.....	4	100001793
9	TRIANGULAR KEY (Not Shown)	1	A05906574
10	DOUBLE BIT KIT (Not Shown)	1	A05906674
31	STUD BOLT	4	A93024130
32	WASHER	4	A93139610
33	BUFFER.....	8	100002438
34	SPACER SLEEVE	4	100015743
35	HEXAGON NUT	4	A93121350
36	AXLE	1	100016187
37	HEXAGON NUT	1	A93121370
38	HEXAGON NUT	1	A93121360
40	SUPPORT AIR END LEFT	1	100006178
41	SUPPORT AIR END RIGHT	1	100006179
44	DISK B	1	A93130100
45	DISK B	1	A93130110
46	HEXAGON NUT	4	A93121340
47	DISK A/B	4	A93139270
52	SCREW.....	1	95001-285
53	WASHER	1	95149-15
54	WASHER	1	95149-16

PACKAGE SHEET METAL & HARDWARE



13-25-546 Page 12

306ECA810-01
Page 3 of 3
(Ref. Drawing)

Order by Part Number and Description. Reference Numbers are for your convenience only.

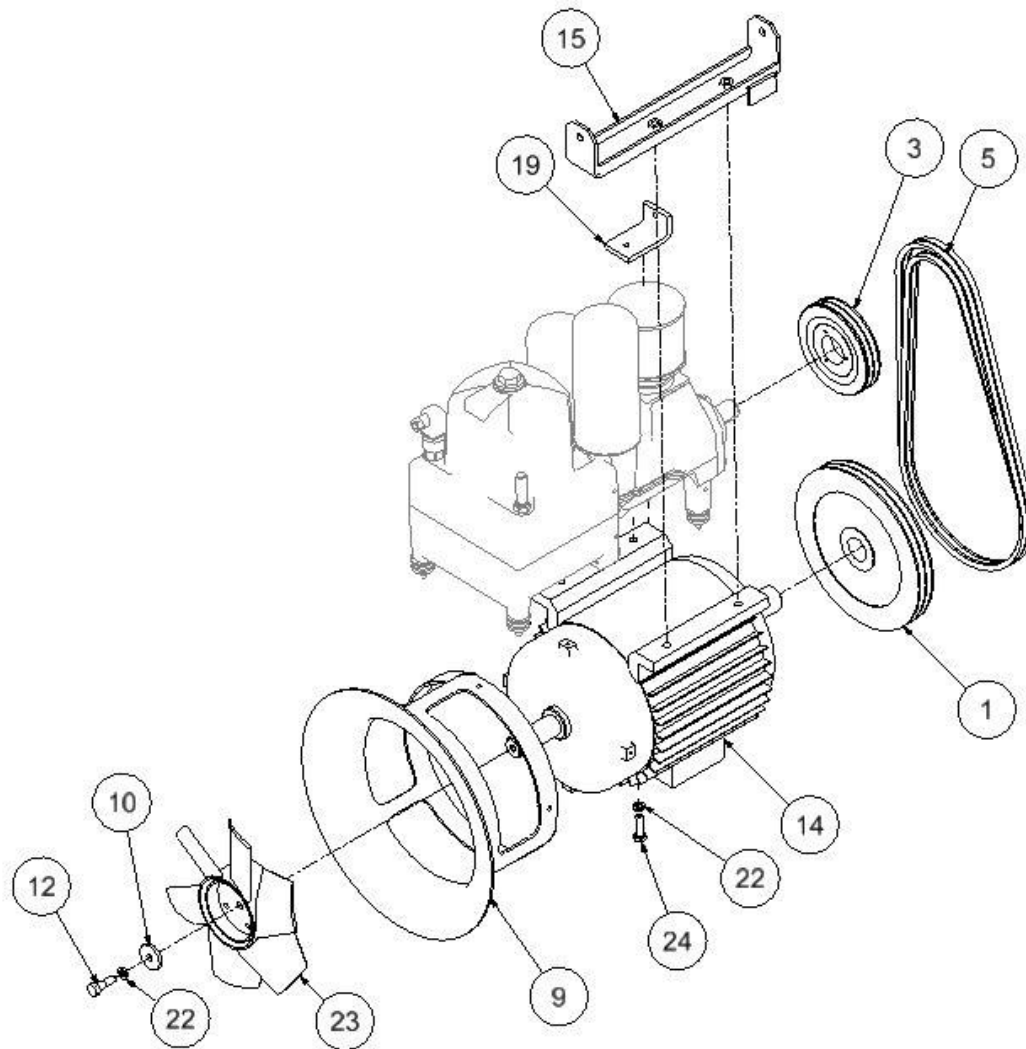
PACKAGE SHEET METAL & HARDWARE

**B/M: 310ECA4023
301ECA4013**

Ref. No.	NAME	QTY.	PART NO.
16	CANOPY FOOT	4	100015142
* 17	FILTER FLEECE	1	100002376
18	FAN SCREEN	1	100002374
55	WASHER	8	A10308-10
56	SCREW.....	8	A93014570

* Parts Included in Compressor Warranty Kit 303KBA6032. Refer to Page 43.

DRIVE GROUP



TEN000945-00
(Ref. Drawing)

Order by Part Number and Description. Reference Numbers are for your convenience only.

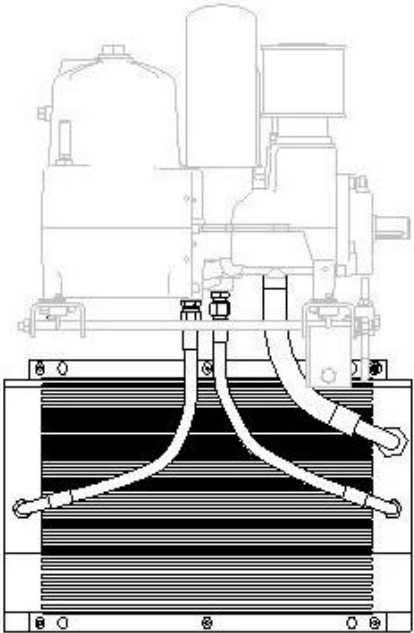
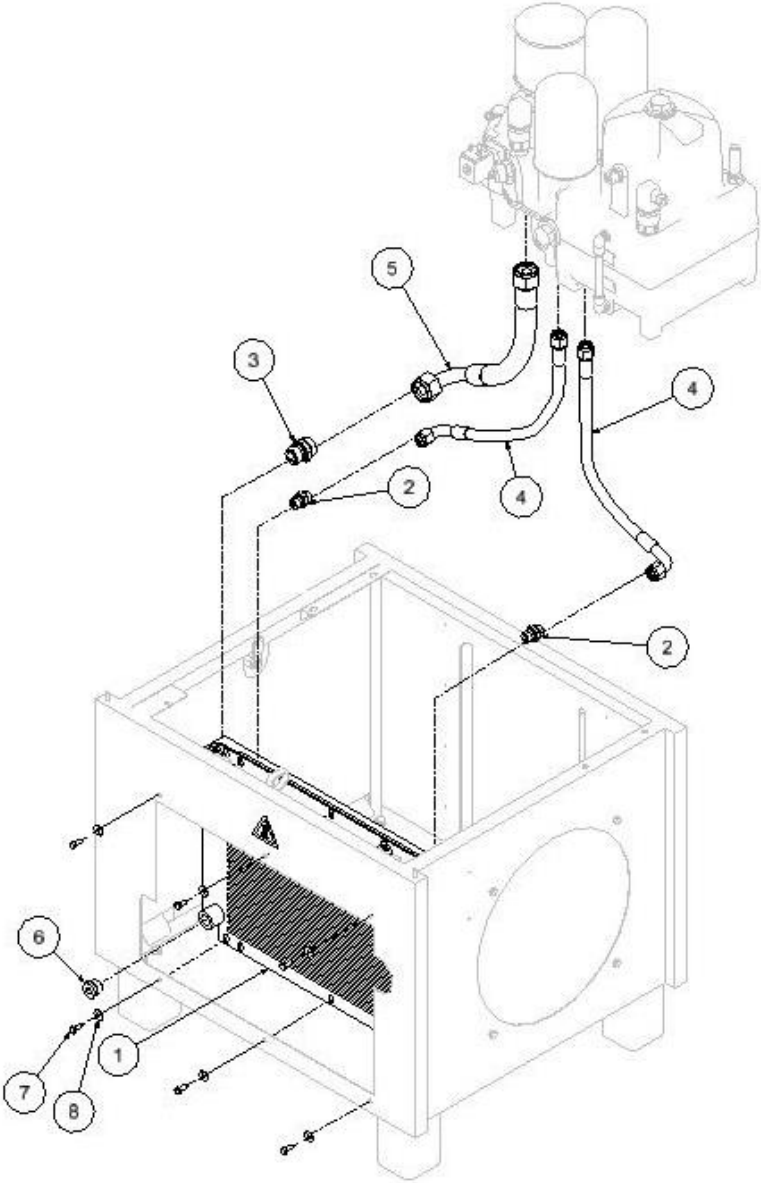
DRIVE GROUP

B/M: 300-306EJB4015
 335-340KBA4004
 302ECA4013
 301ECB4004
 300ECB4004

Ref. No.	NAME	QTY.	PART NO.
9	AIR INTAKE NOZZLE	1	100016192
10	DISK	1	A11506774
12	TIGHT-FIT SCREW	1	A93049900
15	HOLDER ELECTRIC MOTOR	1	100016181
19	TRANSPORT SAFETY DEVICE	1	100016193
22	(2 PC) ROTOR LOCK DISK.....	3	A93149520
23	FAN MOTOR	1	ZS1051180
24	CAP SCREW	2	655HMCA10035Z
25	SCREWø ø ø ø ø ø ø ø ø ø ø ø ø ø ø ø ..	4	44250260
26	DISKø ø ø ø ø ø ø ø ø ø ø ø ø ø ø ø ø ø	4	A93130080

* For Item 14 See Page 53.
 * For Items 1, 3, & 5 See Page 53.

COOLING GROUP



TEN000946-00
(Ref. Drawing)

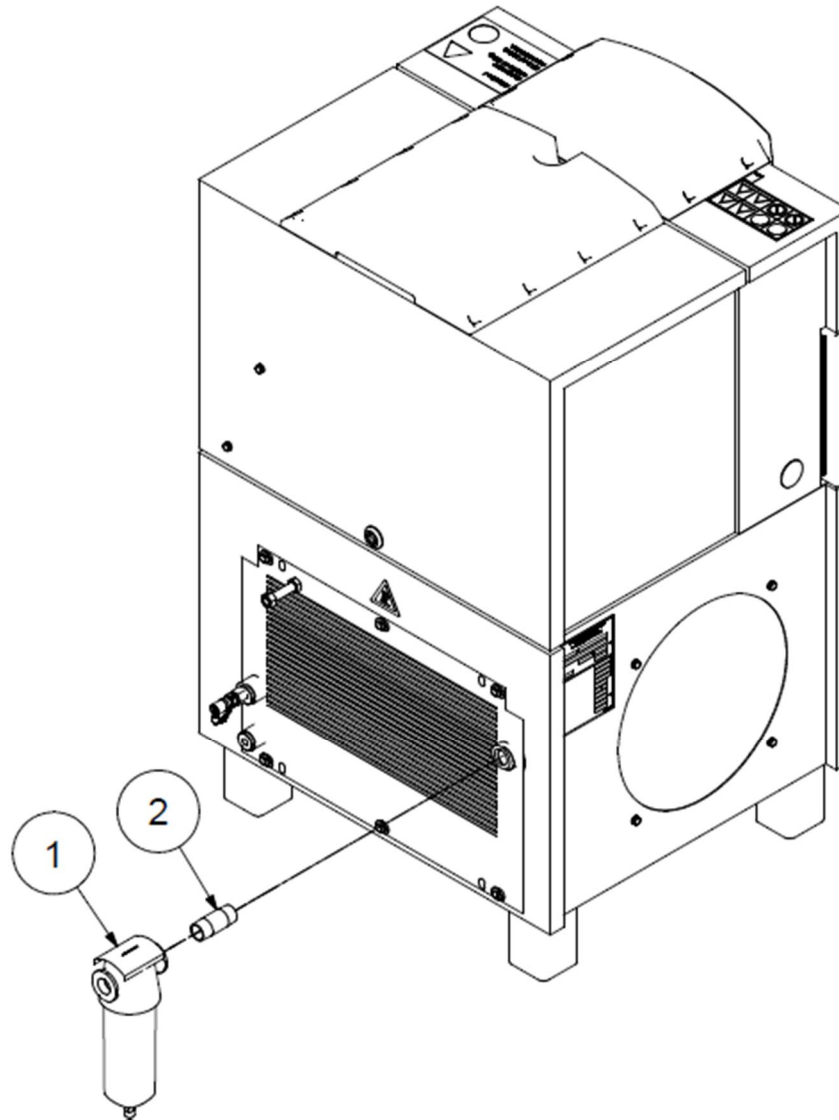
Order by Part Number and Description. Reference Numbers are for your convenience only.

COOLING GROUP

B/M: 300ECB4003
301ECB4003

Ref. No.	NAME	QTY.	PART NO.
1	COOLERø ø ø ø ø ø ø ø ø ø ø ø ø ø ø ø ø .. L07, 10HPø ø ø ø ø ø ø ø ø ø ø ø ø ø ø ø ø ... L11, 15HPø ø ø ø ø ø ø ø ø ø ø ø ø ø ø ø ø ...	1	100016185 100016186
2	HOSE FITTING	2	A93580730
3	HOSE FITTING	1	A93580750
4	HOSE.....	2	100016184
5	HOSE.....	1	100016183
6	LOCKING SCREW	1	A93060480
7	WASHER	6	A10308-10
8	SCREW.....	6	95001-227

OPTIONAL MOISTURE SEPARATOR



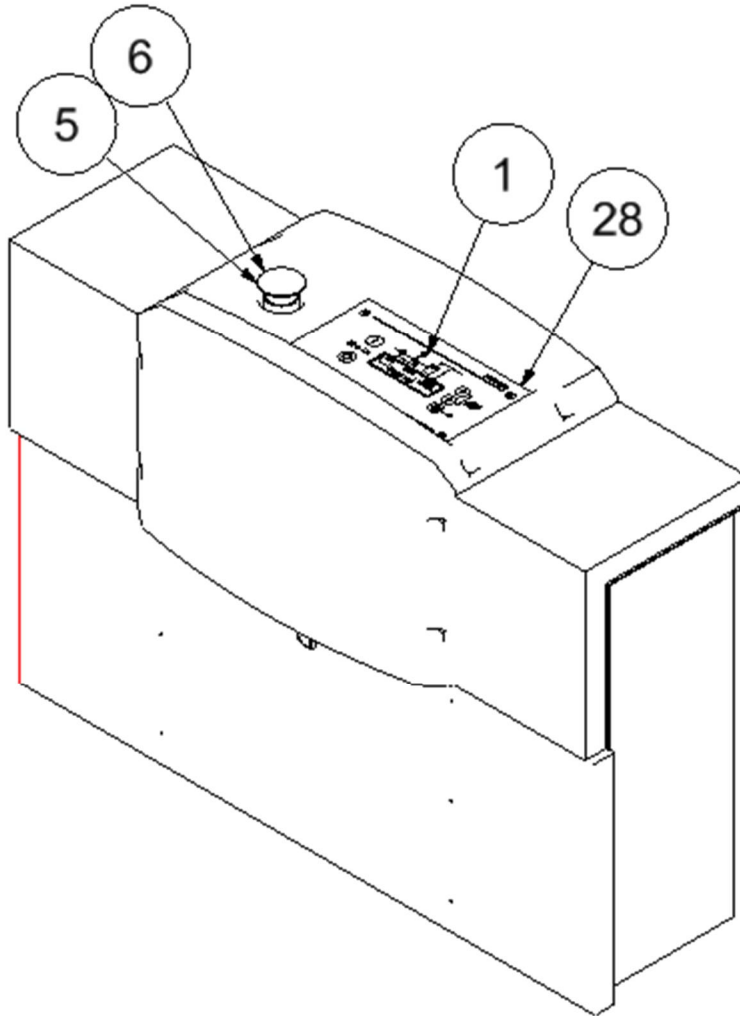
Order by Part Number and Description. Reference Numbers are for your convenience only.

OPTIONAL MOISTURE SEPARATOR

B/M: 302KBA1443

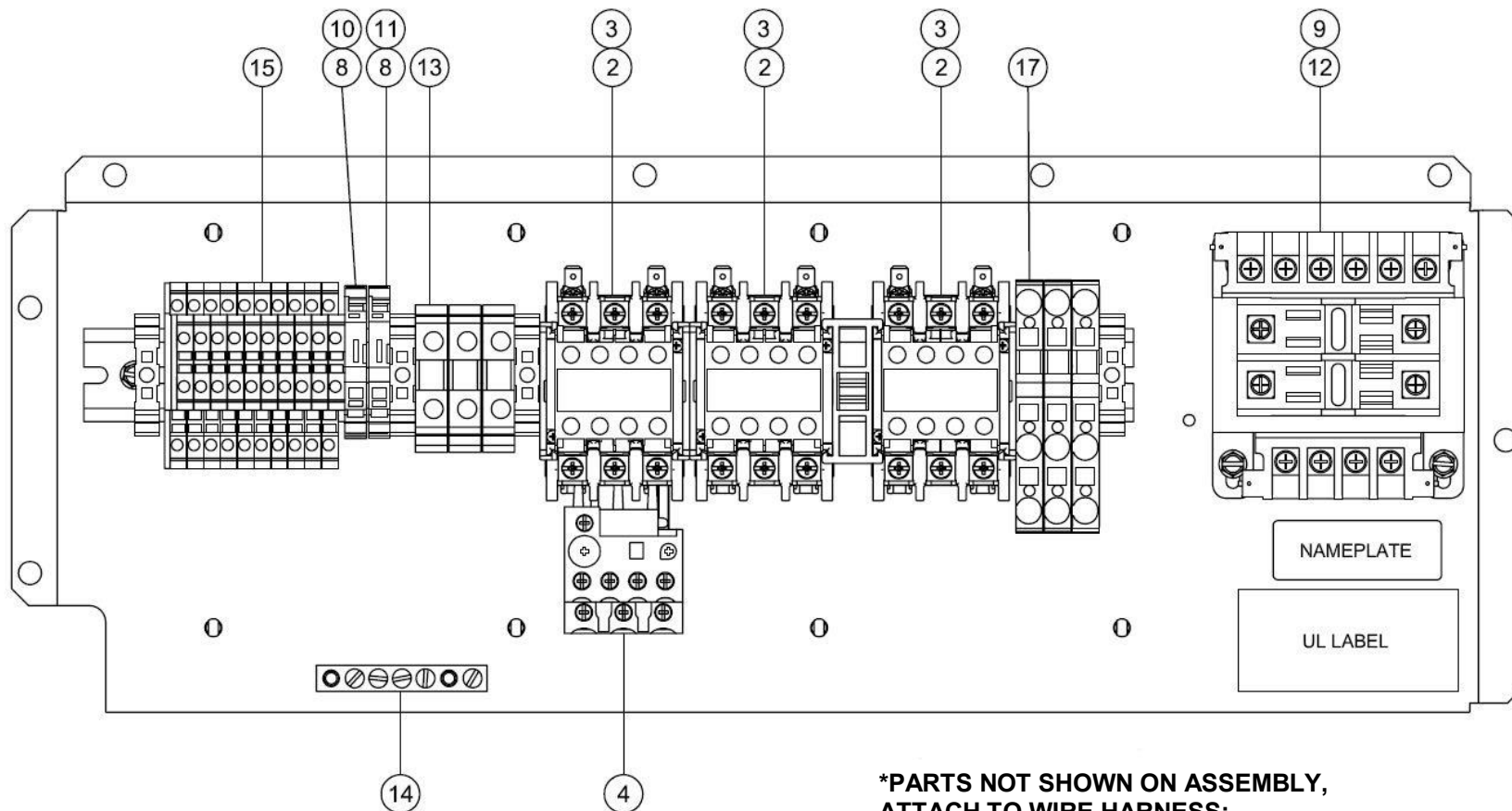
Ref. No.	NAME	QTY.	PART NO.
1	WATER SEPARATOR WITH FLOAT TYPE DRAIN	1	VP1093398
2	PIPE NIPPLE	1	Supplied By Customer

ELECTRICAL BOX DOOR LAYOUT



314ECB810-00
(Ref. Drawing)

CONTROLLER ASSEMBLY – 10 & 15HP – 208T-230T/460T



***PARTS NOT SHOWN ON ASSEMBLY,
ATTACH TO WIRE HARNESS;
ITEM #'S 5, 6, 7, 21, 22 & 23***

**301ECB810-02
(Ref. Drawing)**

Order by Part Number and Description. Reference Numbers are for your convenience only.

CONTROLLER ASSEMBLY – 208-230/460

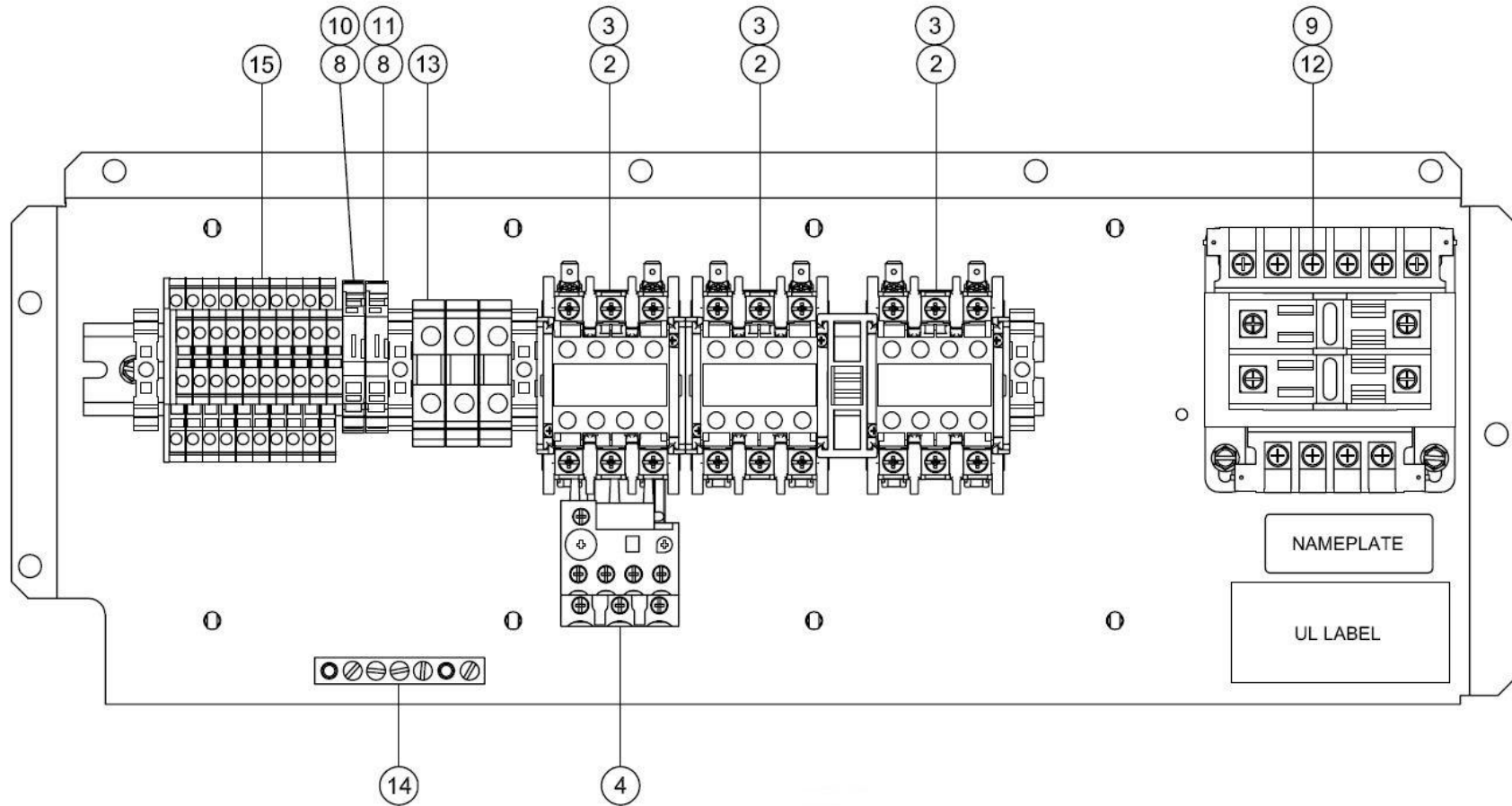
**B/M: 314ECB466
10HP
208-230/460 TRI-VOLT**

**B/M: 315ECB466
10HP
208-230/460 TRI-VOLT**

Ref. No.	NAME	QTY.	PART NO.	PART NO.
2	MAGNETIC CONTACTOR	3	24CA7871	24CA7873
3	AUX CONTACT.....	3	24CA7511	24CA7511
4	RELAY (460V).....	1	24CA7861	24CA7866
	RELAY (208-230V).....	1	24CA7862	24CA7867
5	PUSH/PULL,ENGRAVED"EMERGENCY STOP.....	1	24CA7110	24CA7110
6	CONTACT BLOCK.....	2	24CA7111	24CA7111
8	FUSE TERMINAL BLOCK.....	2	24CA7538	24CA7538
9	FUSE 1 AMP (460V)	2	24CA2779	24CA2779
	FUSE 2 AMP (460V)	2	24CA2781	24CA2781
10	FUSE 0.5 AMP	1	24CA3998	24CA3998
11	FUSE 2 AMP	1	24CA2868	24CA2868
12	TRANSFORMER.....	1	24CA7882	24CA7882
13	TERMINAL BLOCK	3	24CA7518	24CA7518
14	5-POINT GROUND BAR	1	24CA7878	24CA7878
15	TERMINAL BLOCK	10	24CA5984	24CA5984
17	TERMINAL BLOCK	3	24CA7876	24CA7876
21	CONNECTOR	1	24CA7856	24CA7856
22	CONNECTOR	1	24CA7857	24CA7857
23	CONNECTOR	1	24CA7858	24CA7858

* SEE PAGE 56 FOR VOLTAGE CONVERSION KITS

CONTROLLER ASSEMBLY – 10HP & 15HP – 380 & 575 VOLT



***PARTS NOT SHOWN ON ASSEMBLY,
ATTACH TO WIRE HARNESS;
ITEM #'S 5, 6, 7, 21, 22 & 23***

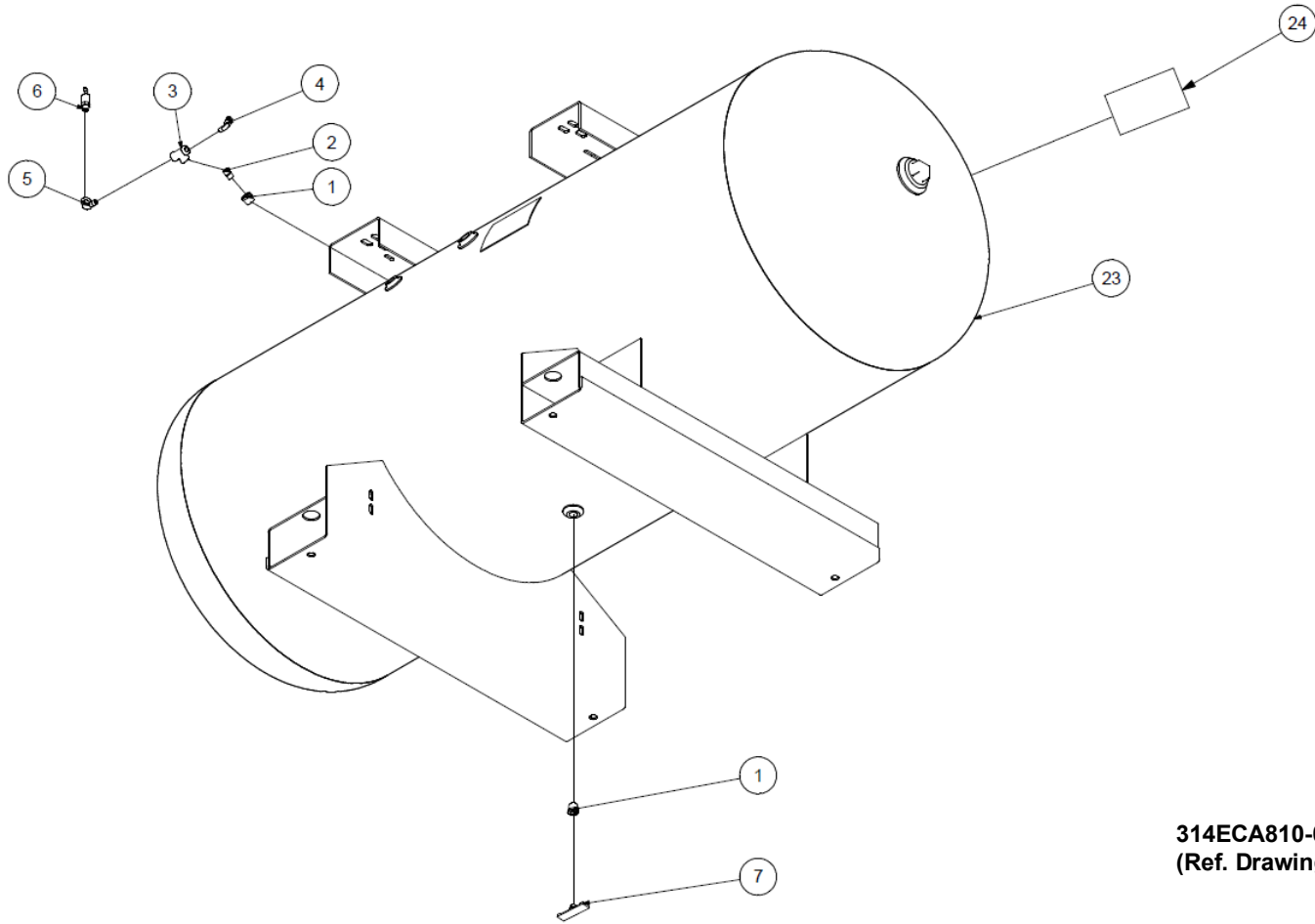
**300ECB810-02
(Ref. Drawing)**

Order by Part Number and Description. Reference Numbers are for your convenience only.

CONTROLLER ASSEMBLY – 10 & 15HP – 380 & 575 VOLT

Ref. No.	NAME	QTY.	B/M: 303ECB466 10HP 380 VOLT	B/M: 305ECB466 10HP 575 VOLT	B/M: 310ECB466 15HP 380 VOLT	B/M: 312ECB466 15HP 575 VOLT
			PART NO.	PART NO.	PART NO.	PART NO.
2	MAGNETIC CONTACTOR	3	24CA7870	24CA7870	24CA7871	24CA7870
3	AUX CONTACT	3	24CA7511	24CA7511	24CA7511	24CA7511
4	RELAY	1	24CA7862	24CA7861	24CA7862	24CA7861
6	CONTACT BLOCK.....	1	24CA7110	24CA7110	24CA7110	24CA7110
8	FUSE TERMINAL BLOCK.....	2	24CA7111	24CA7111	24CA7111	24CA7111
9	FUSE	2	24CA7538	24CA7538	24CA7538	24CA7538
10	FUSE	2	24CA2779	24CA2898	24CA2779	24CA2898
11	FUSE	1	24CA3998	24CA3998	24CA3998	24CA3998
12	TRANSFORMER	1	24CA2868	24CA2868	24CA2868	24CA2968
13	TERMINAL BLOCK.....	1	24CA7882	24CA7882	24CA7882	24CA7882
14	5-POINT GROUND BAR	3	24CA7518	24CA7518	24CA7518	24CA7518
15	TERMINAL BLOCK.....	1	24CA7878	24CA7878	24CA7878	24CA7878
21	CONNECTOR	10	24CA5984	24CA5984	24CA5984	24CA5984
22	CONNECTOR	1	24CA7856	24CA7856	24CA7856	24CA7856
23	CONNECTOR.....	1	24CA7857	24CA7857	24CA7857	24CA7857

MANUAL TANK DRAIN



314ECA810-00
(Ref. Drawing)

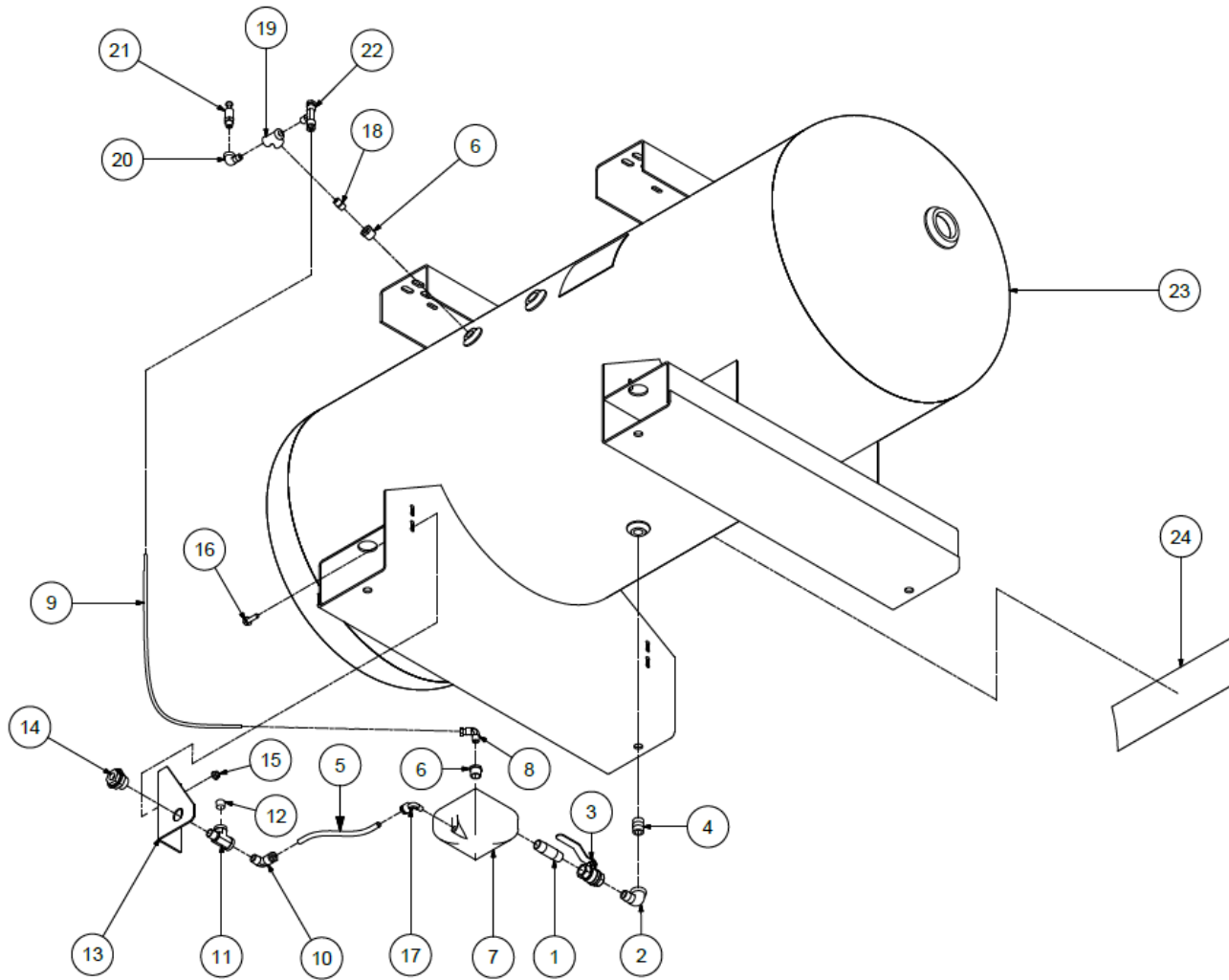
Order by Part Number and Description. Reference Numbers are for your convenience

MANUAL TANK DRAIN

B/M:
303&304KBA4036
300-303ECA4036
302KBA4011
311ECA4013

Ref. No.	NAME	QTY.	PART NO.
1	PIPE BUSHING	2	64E2G
2	PIPE NIPPLE	1	63D1G
3	TEE	1	64G3G
4	TUBE FITTING	1	TEN001711
5	ELBOW	1	64D2G
6	PRESSURE RELIEF VALVE	1	M2843
7	DRAIN COCK.....	1	90C12
23	TANK (See Page 42).....	1	
24	DECAL (Air Station).....	1	306KBA077

STANDARD TANK DRAIN



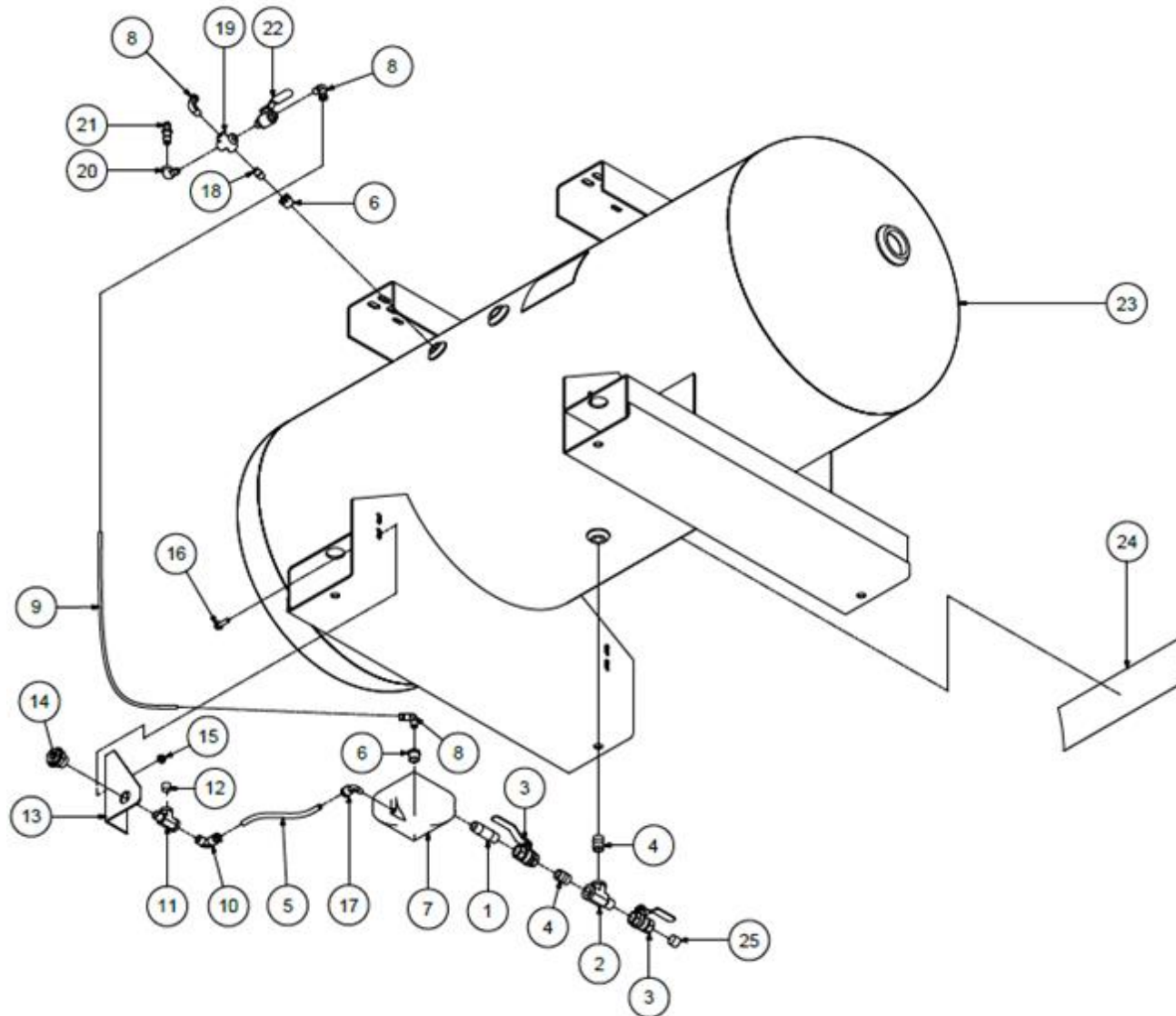
Order by Part Number and Description. Reference Numbers are for your convenience only.

STANDARD TANK DRAIN

B/M: 307UCC4013, 302KBA4011
 303-304KBA4036
 300-303ECA4036
 318EJC4013

Ref. No.	NAME	QTY.	PART NO.
1	PIPE NIPPLE	1	64D5G
2	STREET ELBOW.....	1	M2685
3	BALL VALVE	1	M3162
4	NIPPLE	1	85K5
5	TUBE	1.5FT	64E2G
6	BUSHING-PIPE.....	2	TEN002796
7	MOISTURE DRAIN.....	1	TEN001712
8	TUBE FITTING	1	P08084A
9	TUBING.....	2.0FT	TEN001716
10	TUBE FITTING	1	316AUX498
11	TEE.....	1	64D5G
12	PLUG	1	64AC3
13	BRACKET	1	302UCC017
14	COUPLING	1	64EB1089
15	NUT.....	2	50AW4
16	SCREW.....	2	75LM97
17	TUBE FITTING	1	TEN001713
18	PIPE NIPPLE	1	63D1G
19	TEE.....	1	64G3G
20	STREET ELBOW.....	1	64D2G
21	PRESSURE RELIEF VALVE	1	M2843
22	TUBE FITTING	1	TEN001730
23	AIR RECEIVER,(SEE PAGE 56).....	1	
24	DECAL, "AIR STATION"	1	306KBA077

CALIFORNIA CODE TANK DRAIN



319EJC810-00
(Ref. Drawing)

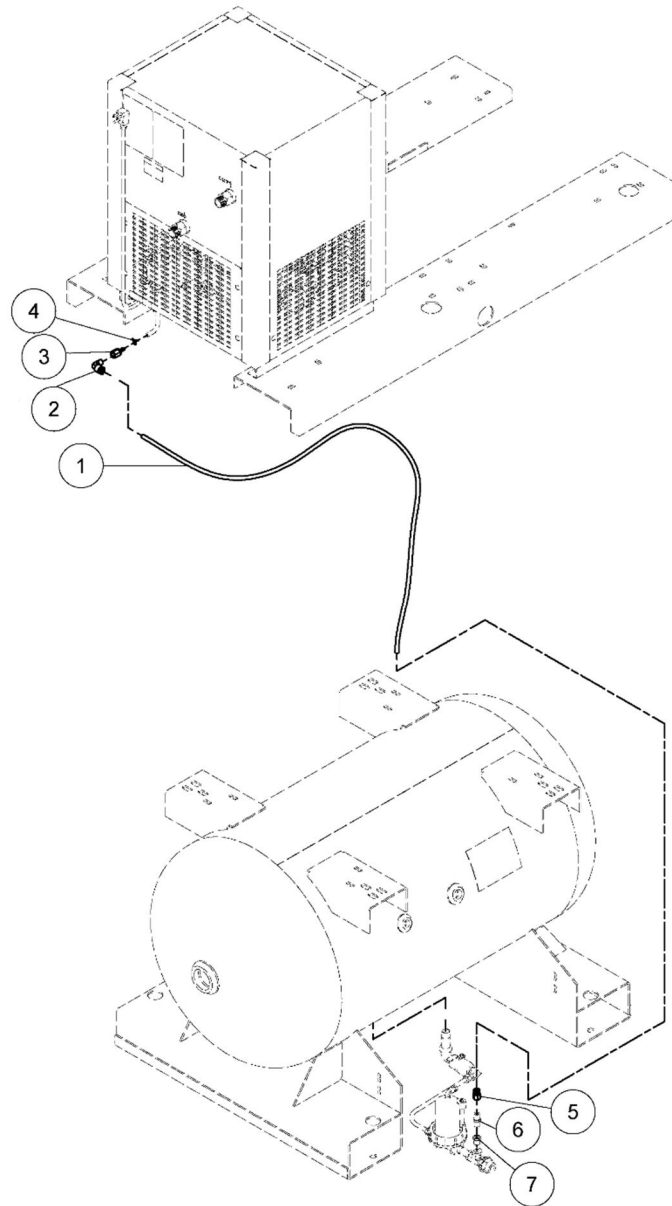
Order by Part Number and Description. Reference Numbers are for your convenience only.

CALIFORNIA CODE TANK DRAIN

B/M: 302KBA4011, 307UCC4013
 303-304KBA4036
 300-303ECA4036
 317EJC4013

Ref. No.	NAME	QTY.	PART NO.
1	PIPE NIPPLE.....	1	64EB1099
2	TEE.....	1	317AUX498
3	BALL VALVE.....	2	M2685
4	NIPPLE.....	2	M3162
5	TUBE.....	1.5FT	85K5
6	BUSHING.....	1	64E2G
7	MOISTURE DRAIN.....	1	TEN002796
8	TUBE FITTING.....	3	TEN001712
9	TUBING.....	2.0FT	P08084A
10	TUBE FITTING.....	1	TEN001716
11	TEE.....	1	316AUX498
12	PLUG.....	1	64AC3
13	BRACKET.....	1	302UCC017
14	COUPLING.....	1	50AW4
15	NUT.....	2	75LM97
16	SCREW.....	2	TEN001713
17	TUBE FITTING.....	1	63U4X07G
18	PIPE NIPPLE.....	1	64K1G
19	CROSS.....	1	64D26G
20	ELBOW.....	1	M2843
21	PRESSURE RELIEF VALVE.....	1	90AR1185
22	BALL VALVE.....	1	50AW4
23	AIR RECEIVER . 120 GALLON.....	1	301ELA645
	AIR RECEIVER . 240 GALLON.....	1	302ELA645
24	DECAL, "AIR STATION".....	1	306KBA077
25	PLUG.....	1	64AC4

RNC DRYER DRAIN PIPING



307KBA810-00
(Ref. Drawing)

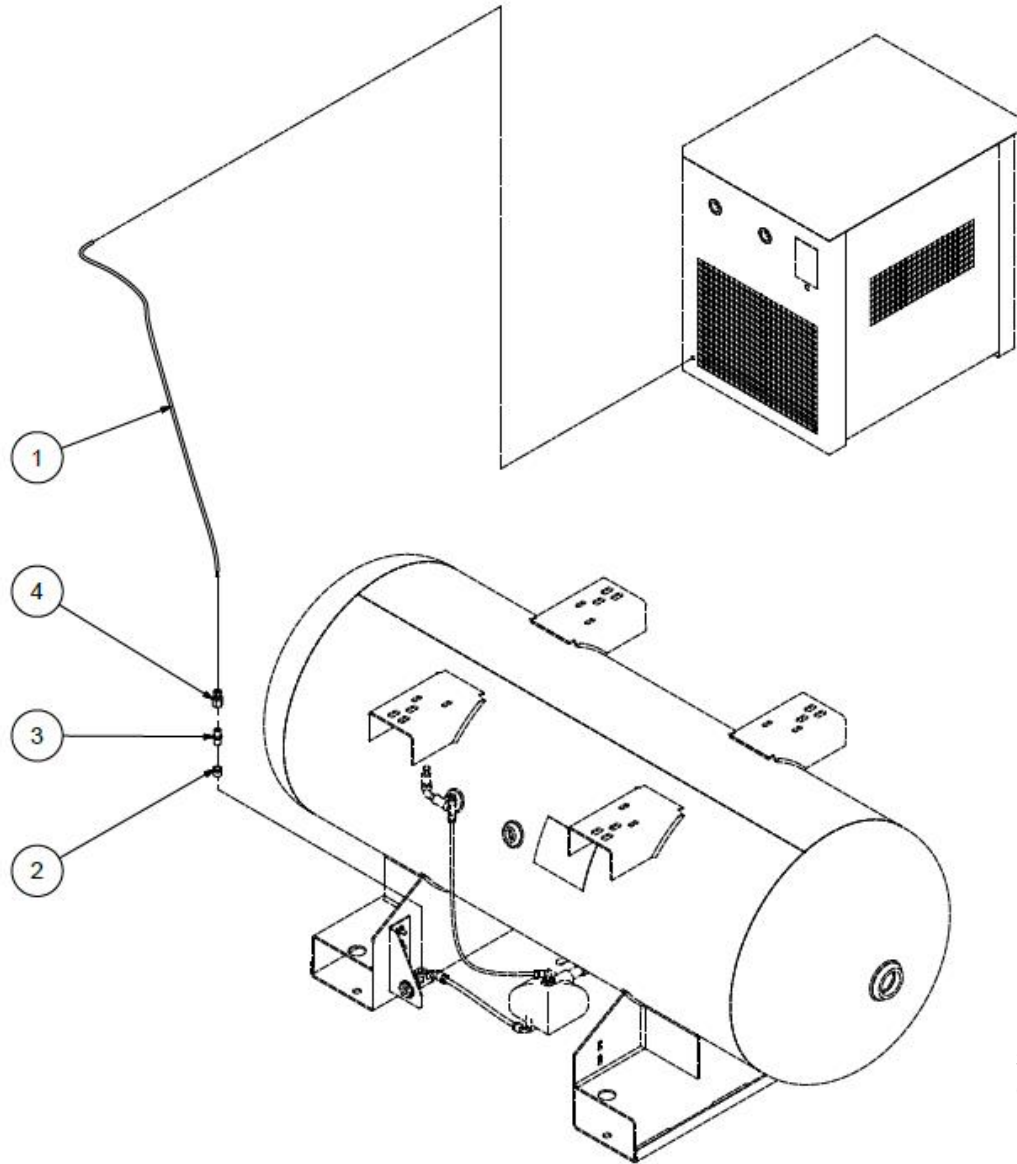
Order by Part Number and Description. Reference Numbers are for your convenience only.

RNC DRYER DRAIN PIPING

B/M: 357KBA4013

Ref. No.	NAME	QTY.	PART NO.
1	TUBE (In Feet)	6	P08084A
2	ELBOW TUBE	1	M2569
3	ADAPTOR	1	29Z507
4	HOSE CLAMP	1	VP1062634
5	COMPRESSION FITTING	1	M2319
6	CHECK VALVE	1	90AR261
7	PIPE BUSHING	1	M3079

GSRN DRYER DRAIN PIPING



306EJB810-00
(Ref. Drawing)

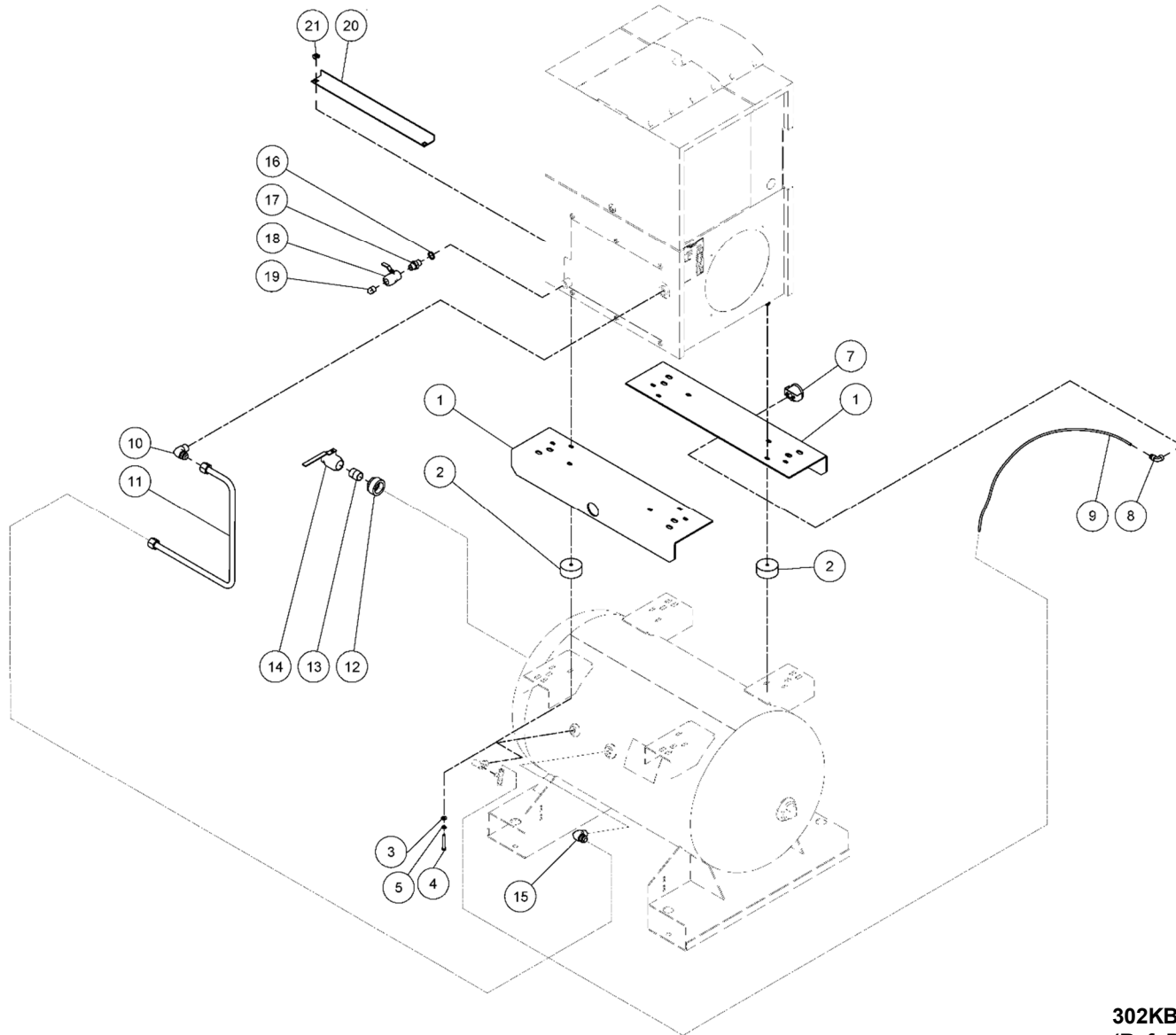
Order by Part Number and Description. Reference Numbers are for your convenience only.

GSRN DRYER DRAIN PIPING

B/M: 302EJB4013

Ref. No.	NAME	QTY.	PART NO.
1	TUBE (In Feet)	4	P08084A
2	BUSHING PIPE	1	M3079
3	VALVE-CHECK	1	90AR261
4	COMPRESSION FITTING	1	M2319

TANK MOUNTED LESS DRYER – MOUNTING GROUP



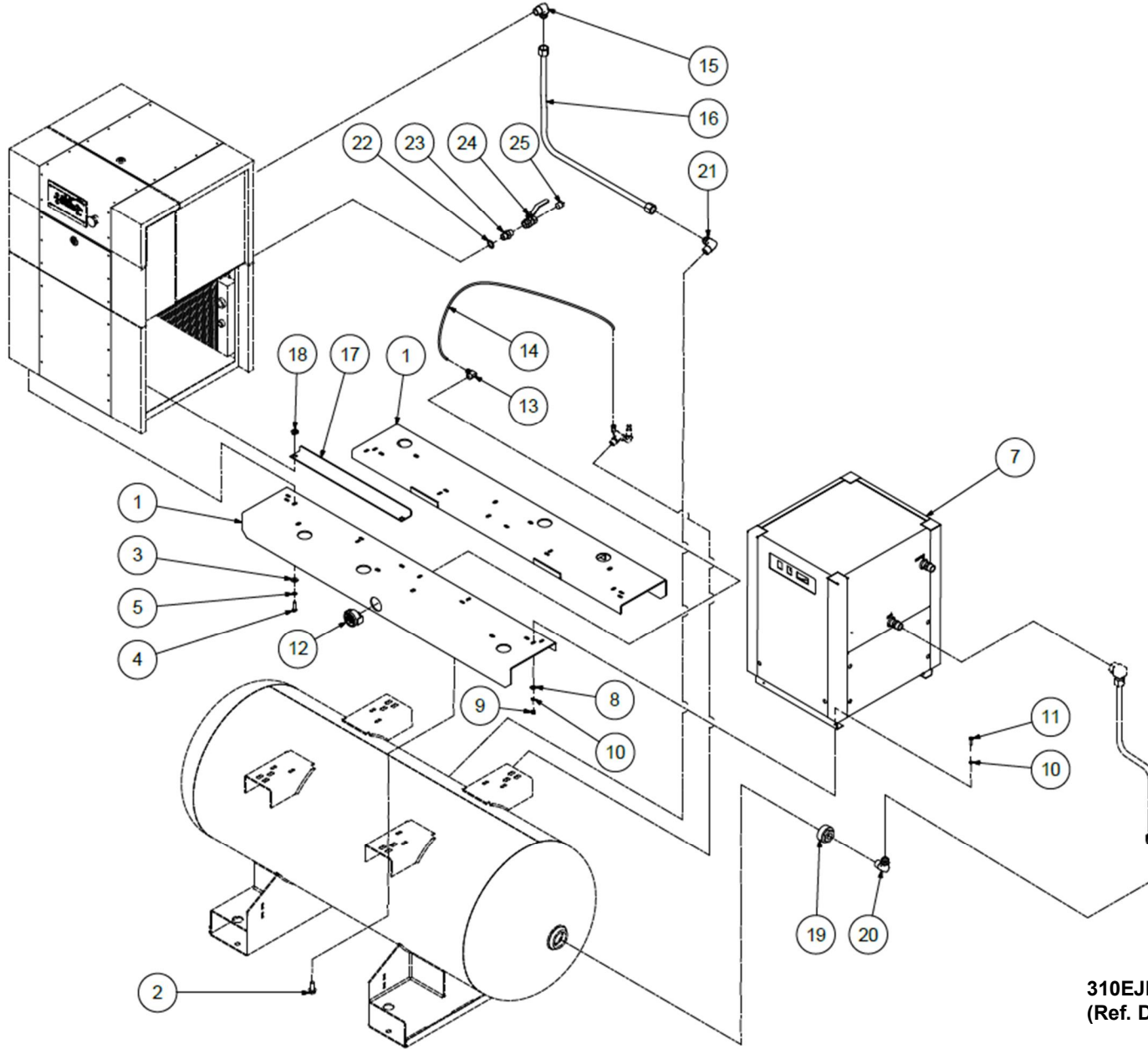
Order by Part Number and Description. Reference Numbers are for your convenience only.

TANK MOUNTED LESS DRYER – MOUNTING GROUP

B/M: 302ECA4017

Ref. No.	Name of Part	Qty.	Part No.
1	BRACKET, TANK MOUNT (WHITE)		
	80 & 120 GALLON TANK	2	300KBA017W
	240 GALLON TANK	2	300ECA017
2	SPACER.....	4	300KBA144W
3	WASHER.....	8	95F2
4	SCREW.....	4	75A55Z
5	LOCKWASHER	4	M3057
7	AIR PRESSURE GAUGE.....	1	VP1043155
8	FITTING	1	M3199
9	TUBING (In Feet).....	3 FT	P08084A
10	TUBE FITTING	1	86H245
11	TUBE W/FIT		
	80 & 120 GALLON TANK	1	303KBA863
	240 GALLON TANK	1	311ECA863
12	PIPE BUSHING	1	64E11G
13	PIPE NIPPLE.....	1	63U16X14G
14	BALL VALVE	1	P11774A
15	ADAPTOR	1	29Z241
16	GASKET	1	80034799
17	FITTING	1	64EB1088
18	BALL VALVE	1	M2685
19	PLUG	1	64AA7
20	BRACKET	2	302KBA017W
21	NUT.....	4	31D83

TANK MOUNTED COMPRESSOR AND DRYER-RNC OPTION
(80, 120, & 240 GALLON)



310EJB810-00
(Ref. Drawing)

Order by Part Number and Description. Reference Numbers are for your convenience only.

**TANK MOUNTED COMPRESSOR AND DRYER-RNC OPTION
(80, 120, & 240 GALLON)**

B/M: 302EJB4023, 303EJB4013
303EJB4023, 304EJB4023
305EJB4013, 305EJB4023
310EJB4013

Ref. No.	Name of Part	Qty.	Part No.
1	SUPPORT, 80 GAL.TANK (WHITE)	2	TEN009303
2	SCREW	4	75LM135
3	WASHER	4	M3056
4	CAP SCREW	4	M3459
5	LOCK WASHER	4	M3057
7	DRYER (See Page 42)		
8	WASHER	4	M3481
9	NUT	4	50B1Z
10	LOCK WASHER	8	95B1Z
11	SCREW	4	655EC04Z
12	AIR PRESSURE GAUGE	1	VP1043155
13	FITTING	1	M3199
14	TUBING	4 FT	P08084A
15	FITTING-TUBE	1	86H245
16	TUBE-W/FIT		
	80 & 120 GALLON TANK	1	300KBA863
	240 GALLON TANK	1	310ECA863
17	BRACKET	2	302KBA017W
18	NUT	4	31D83
19	BUSHING 3/4+	1	M3183
	BUSHING 1/2+	1	M3184
20	ADAPTOR 90DEG	1	29Z241
21	ADAPTOR 90DEG	1	29Z243
22	ADAPTOR 90DEG	1	29Z241
23	FITTING	1	64EB1088
24	BALL VALVE 1/2+	1	M2685
25	PLUG 1/2+	1	64AA7

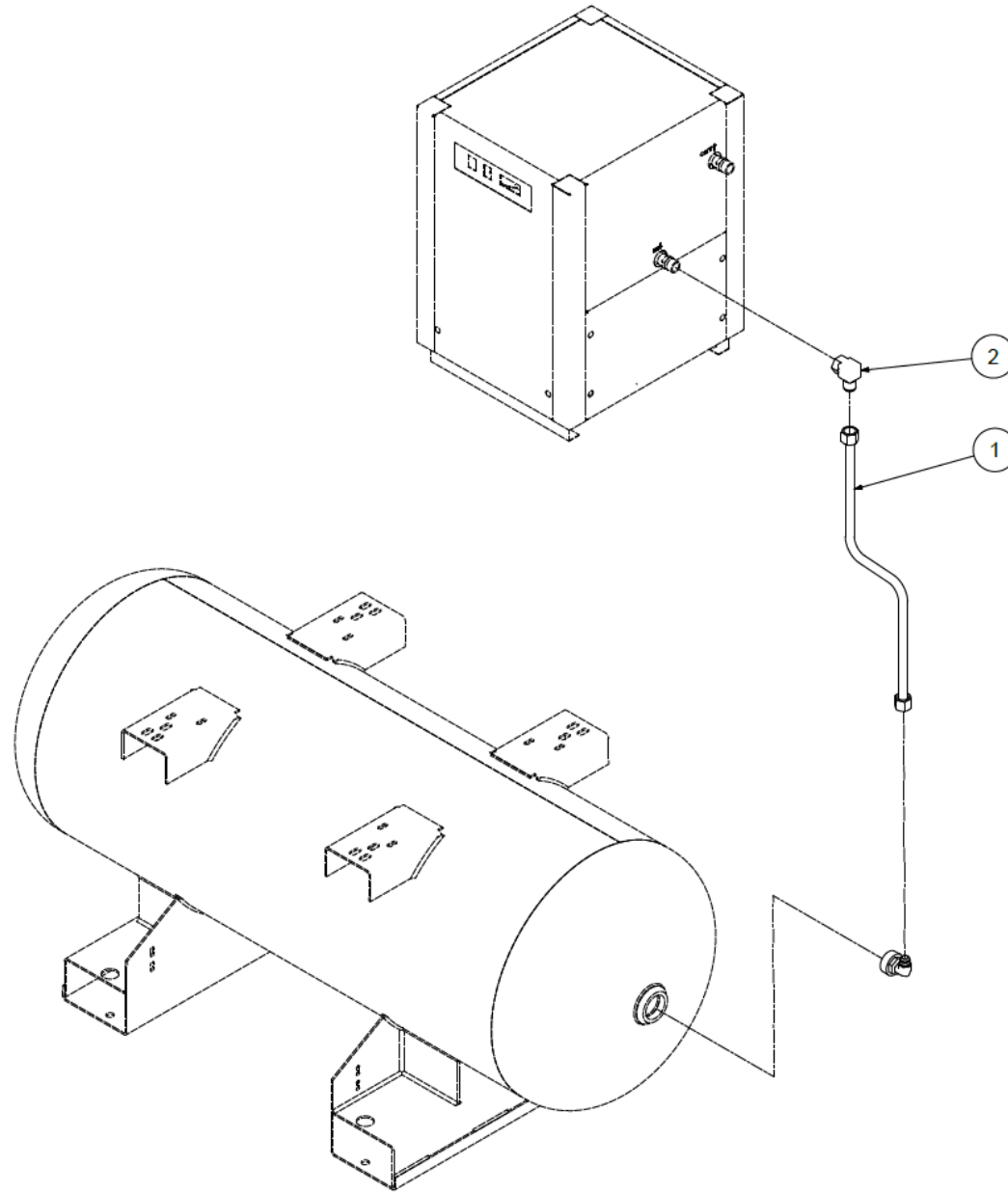
Order by Part Number and Description. Reference Numbers are for your convenience only.

**RNC DRYER - BYPASS PIPING OPTION
(80, 120, & 240 GALLON)**

B/M: 311EJB4013, 313EJB4013
315EJB4013, 316EJB4013
317EJB4013, 318EJB4013
319EJB4013, 320EJB4013

Ref. No.	Name of Part	Qty.	L7 Part No.	L11 Part No.
1	TUBE AS 80 GAL TANK.....	1	TEN010126	TEN010065
	TUBE AS 120 GAL TANK.....	1	TEN010130	TEN010075
	TUBE AS 240 GAL TANK.....	1	TEN010128	TEN010073
2	CONNECTOR 80 GAL TANK.....	1	86H139	86H137
	ADAPTOR 90DEG 120 GAL TANK.....	1	29Z243	29Z241
	ADAPTOR 90DEG 240 GAL TANK.....	1	29Z243	29Z241
3	TEE.....	2	64G6G	64G7G
4	BALL VALVE.....	3	M3590	CQM3756
5	CONNECTOR.....	2	86H139	86H137
6	TUBE AS.....	1	TEN010096	TEN010067
7	TUBE AS.....	8	TEN010092	TEN010070
8	ADAPTOR 90DEG.....	2	86H80	29Z241
9	PIPE NIPPLE.....	1	63F16G	63G19G
10	ADAPTOR 90DEG.....	1	50B1Z	64D6G

**RNC DRYER – NO-BYPASS PIPING OPTION
(80, 120, & 240 GALLON)**



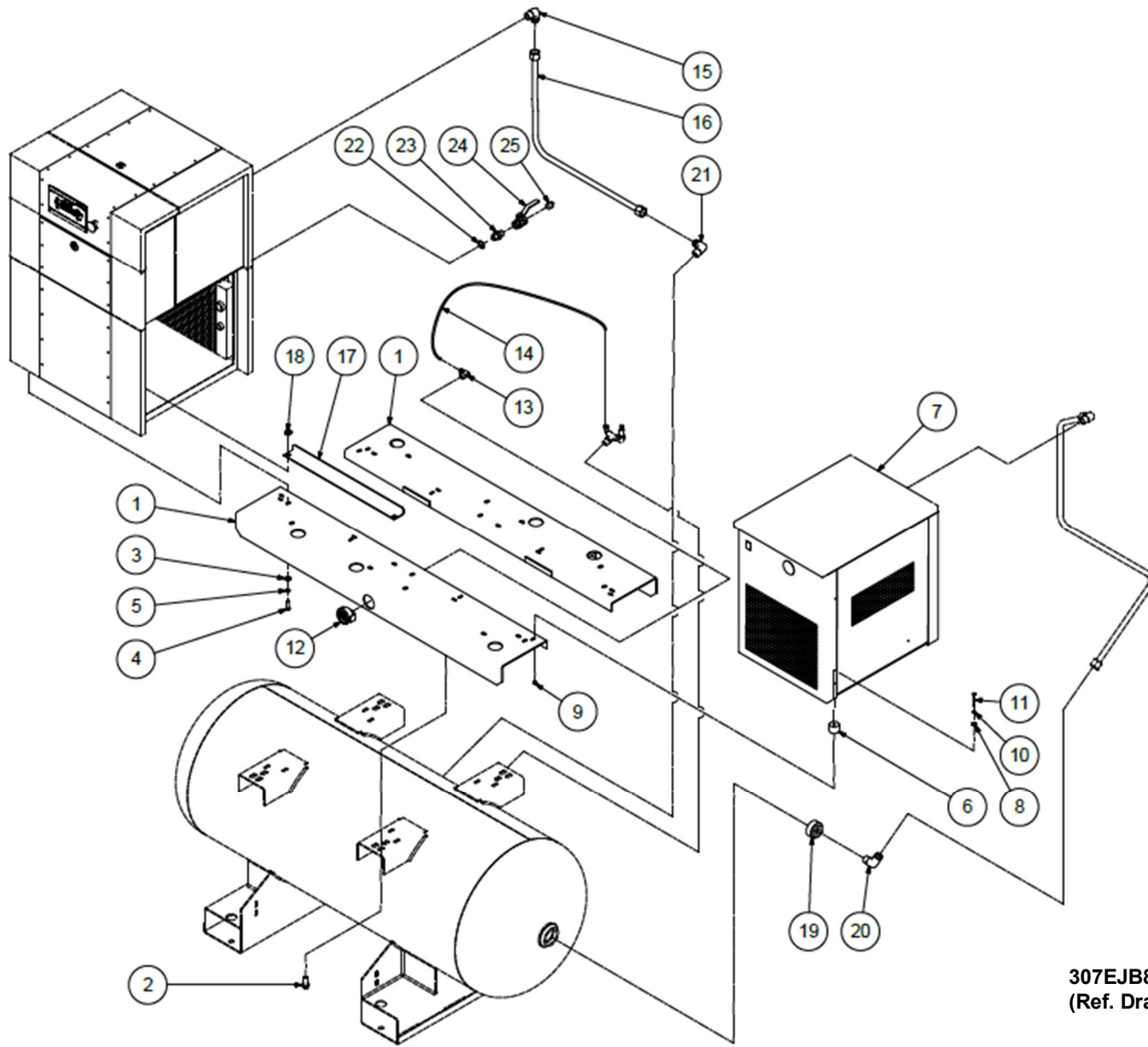
Order by Part Number and Description. Reference Numbers are for your convenience only.

**RNC DRYER – NO-BYPASS PIPING OPTION
(80, 120, & 240 GALLON)**

**B/M: 321EJB4013
322EJB4013**

Ref. No.	Name of Part	Qty.	L7 Part No.	L11 Part No.
1	TUBE AS, 80 GAL TANK	1	TEN010162	TEN010316
	TUBE AS, 120 GAL TANK	1	TEN010164	TEN010318
	TUBE AS, 240 GAL TANK	1	TEN010166	TEN010320
2	ADAPTOR 90 DEG	1	86H80	86H82

TANK MOUNTED COMPRESSOR AND DRYER-GSRN OPTION
(80, 120, & 240 GALLON)



307EJB810-00
(Ref. Drawing)

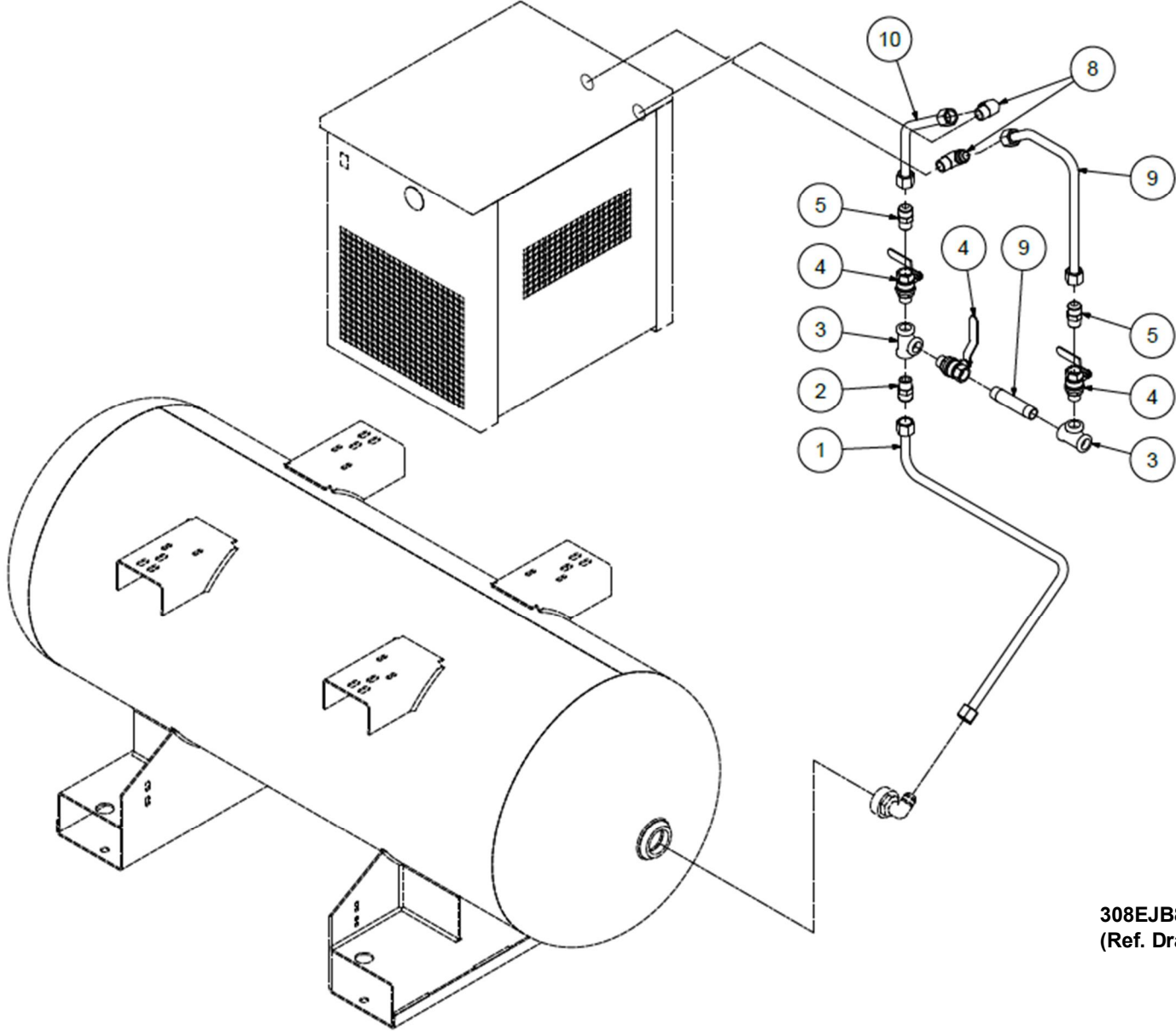
Order by Part Number and Description. Reference Numbers are for your convenience only.

**TANK MOUNTED COMPRESSOR AND DRYER-GSRN OPTION
(80, 120, & 240 GALLON)**

B/M: 301EJB4023, 303EJB4013
305EJB4013, 306EJB4023
311EJC4013

Ref. No.	Name of Part	Qty.	Part No.
1	SUPPORT, 80 GAL.TANK (WHITE)	2	TEN009303
2	SCREW	4	75LM135
3	WASHER	4	M3056
4	CAP SCREW	4	M3459
5	LOCK WASHER	4	M3057
6	SPACER	4	TEN009094
7	DRYER (See Page 42)		
8	WASHER	4	M3481
9	FLANGED NUT	4	VP1036511
10	LOCK WASHER	4	95B1Z
11	SCREW	4	665HMCA06050Z
12	AIR PRESSURE GAUGE	1	VP1043155
13	FITTING	1	M3199
14	TUBING	4 FT	P08084A
15	FITTING-TUBE	1	86H245
16	TUBE-W/FIT 80 & 120 GALLON TANK	1	300KBA863
	TUBE-W/FIT 240 GALLON TANK.....	1	310ECA863
17	BRACKET	2	302KBA017W
18	NUT	4	31D83
19	BUSHING 3/4+.....	1	M3183
	BUSHING 1/2+.....	1	M3184
20	ADAPTOR 90DEG.....	1	29Z241
	ADAPTOR 90DEG.....	1	29Z243
21	ADAPTOR 90DEG.....	1	29Z241
22	GASKET RING	1	80034799
23	FITTING.....	1	64EB1088
24	BALL VALVE 1/2+.....	1	M2685
25	PLUG 1/2+.....	1	64AA7

**GSRN DRYER - BYPASS PIPING OPTION
(80, 120, & 240 GALLON)**



**308EJB810-00
(Ref. Drawing)**

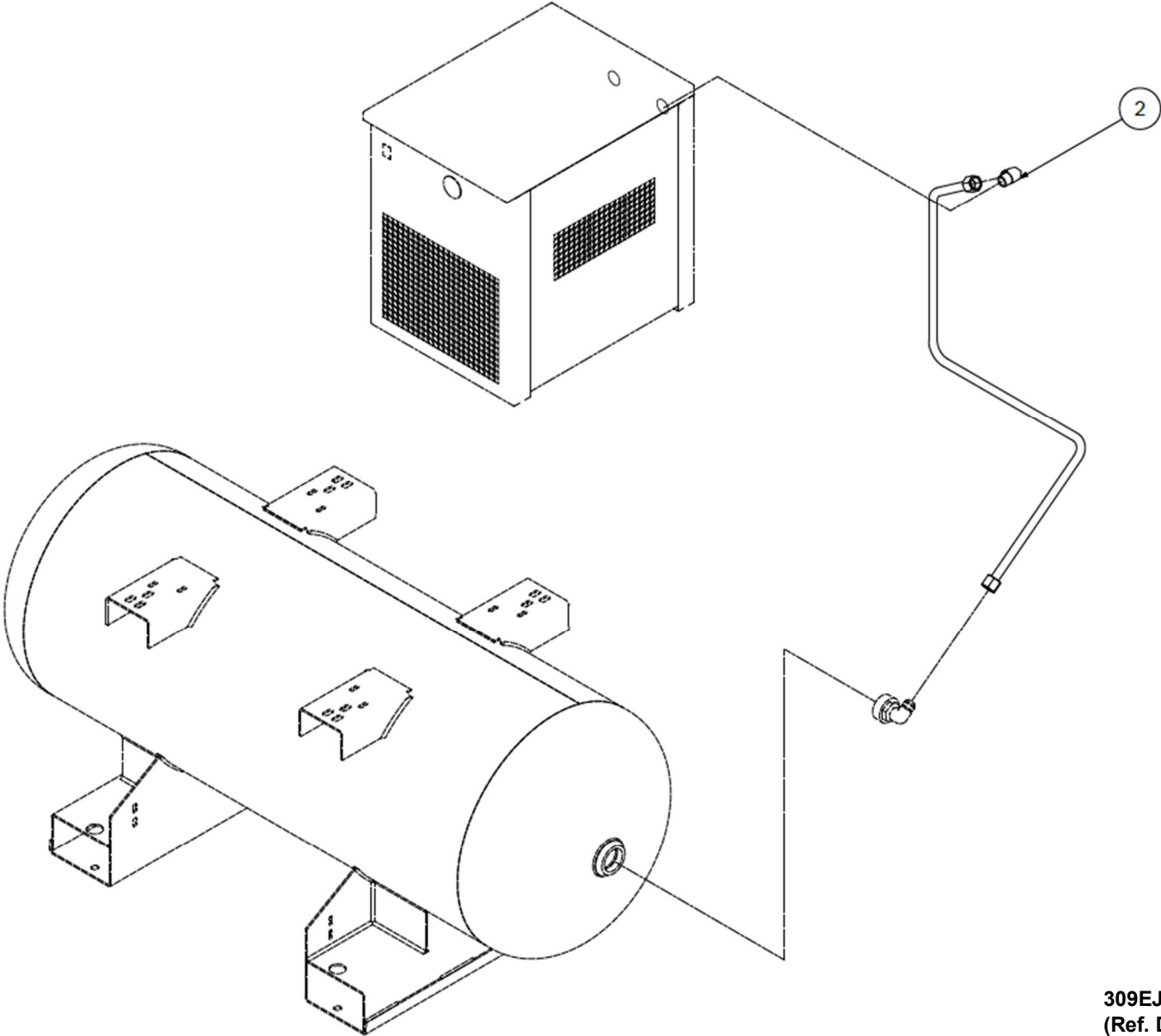
Order by Part Number and Description. Reference Numbers are for your convenience only.

**GSRN DRYER - BYPASS PIPING OPTION
(80, 120, & 240 GALLON)**

**B/M: 306EJB4013
308EJB4013**

Ref. No.	Name of Part	Qty.	Part No.
1	TUBE W/ BYPASS TO 80 GAL TANK	1	TEN009352
	TUBE W/ BYPASS TO 120 GAL TANK	1	TEN009344
	TUBE W/ BYPASS TO 240 GAL TANK	1	TEN009355
2	ADAPTOR	1	86H137
3	ADAPTOR TEE.....	2	64G7G
4	BALL VALVE.....	3	CQM3756
5	ADAPTOR	2	86H137
6	TUBE AS	1	TEN011195
7	TUBE AS	1	TEN011197
8	ADAPTOR 90 DEG	2	29Z241
9	NIPPLE-PIPE.....	1	63G19G

**GSRN DRYER – NO-BYPASS PIPING OPTION
(80, 120, & 240 GALLON)**



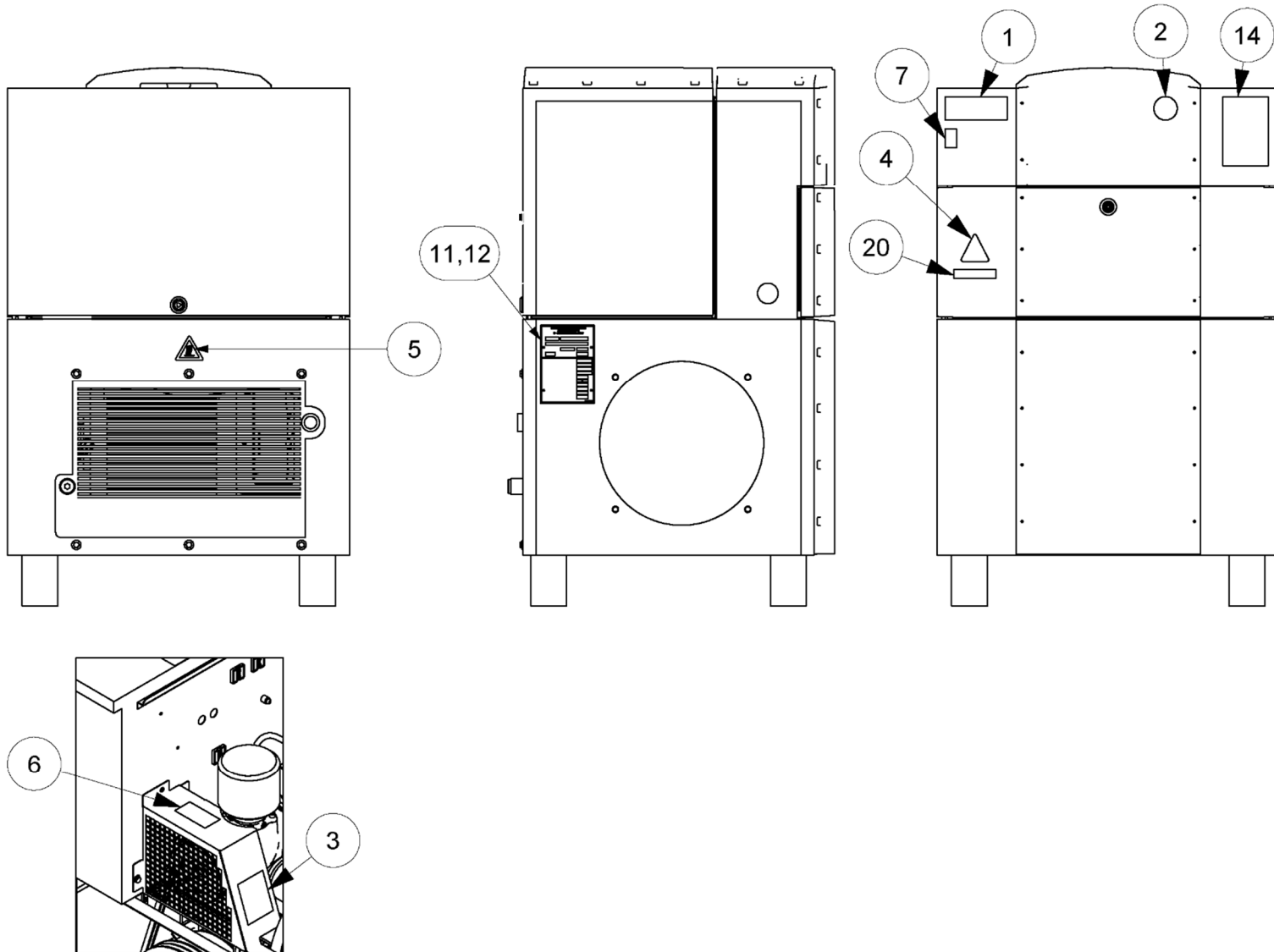
Order by Part Number and Description. Reference Numbers are for your convenience only.

**GSRN DRYER – NO-BYPASS PIPING OPTION
(80, 120, & 240 GALLON)**

B/M: 309EJB4013

Ref. No.	Name of Part	Qty.	Part No.
1	TUBE W/O BYPASS TO 80 GAL TANK	1	TEN011208
	TUBE W/O BYPASS TO 120 GAL TANK	1	TEN011203
	TUBE W/O BYPASS TO 240 GAL TANK	1	TEN011205
2	ADAPTOR 90 DEG	1	29Z241

DECAL LAYOUT



Order by Part Number and Description. Reference Numbers are for your convenience only.

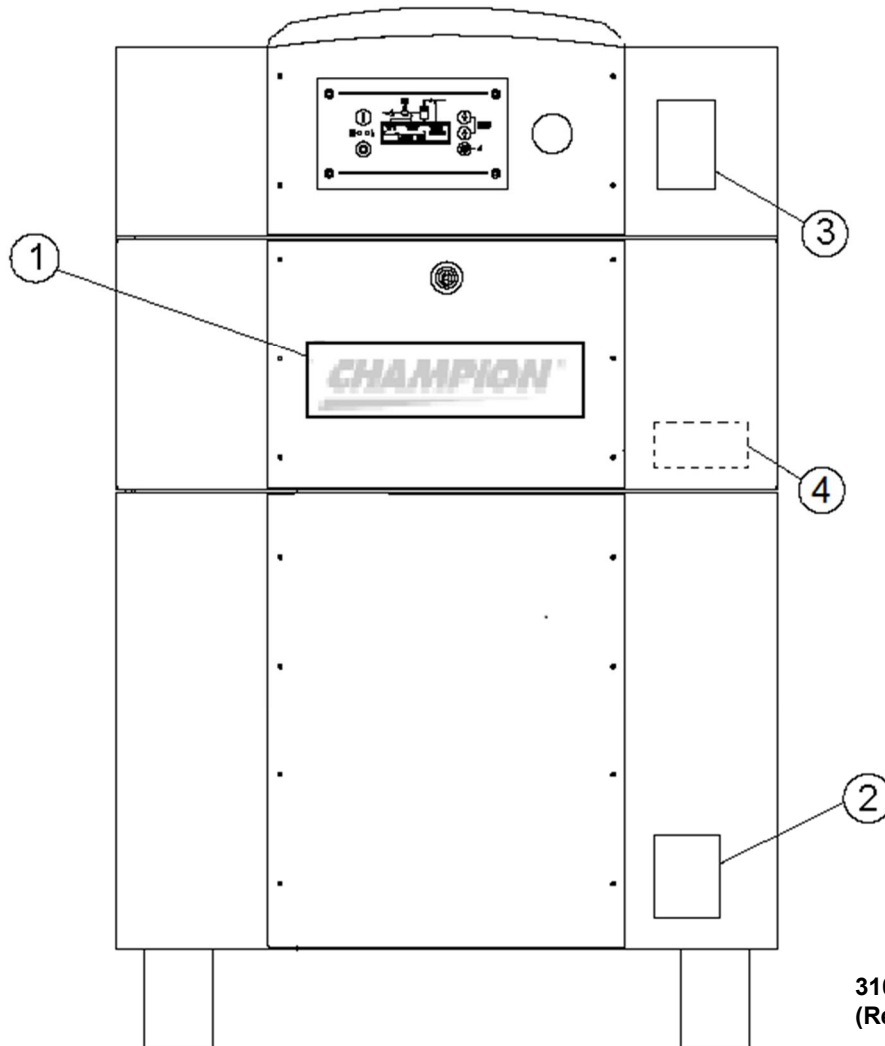
DECAL LAYOUT

B/M: 301ECA4011

Ref. No.	Name of Part	Qty.	Part No.
1	SIGN "SAFETY".....	1	A93638650
2	LABEL BACKGROUND EMERGENCY STOP.....	1	A93631100
3	SIGN "TRANSPORT SAFTY DEVICE".....	1	A93633010
4	LABEL SMALL (FLASH)	1	C20089-557
5	LABEL "HOT SURFACE"	1	A93630300
6	ARROW SIGN.....	1	A04561374
7	LABEL SAFETY VALVE 15BAR.....	1	100009159
8	WARNING SIGN "OIL FILLING".....	1	A93635390
13	DECAL LUBRICANT		
	ROTORLUB 4000	1	312EBQ077
	ROTORLUB 8000	1	313EBQ077
	ROTORLUB 400FG	1	314EBQ077
	ROTORLUB 8000TH	1	302EBQ077
	ROTORLUB 8000FG	1	CC1010089
14	DECAL . NOTICE	1	CC1009474
17	DECAL, GD-CD MANUAL.....	1	VP1009795
19	POCKET 9-1/2+x 12" ADHESIVE BACKED 9 GA	1	VP1009797
20	VOLTAGE SIGN		
	230 V.....	1	A93636090
	380 V.....	1	A93636010
	460 V.....	1	A93636040
	575 V.....	1	A93636070

Order by Part Number and Description. Reference Numbers are for your convenience only

DECAL LAYOUT



310KBA810-00
(Ref. Drawing)

B/M: 301KBA4011

Ref. No.	NAME	QTY.	PART NO.
1	DECAL, "CHAMPION, BLACK"	1	311KBA077
2	DECAL, "L07"	1	307KBA077
2	DECAL, "L11"	1	309KBA077
3	DECAL - CAGI PERFORMANCE	1	CC1031484
*4	DECAL-OVERLOAD	1	TEN012132

* To be installed inside control box.

DRIVE SYSTEM HARDWARE

208-230-380-460-575 VOLT, 60HZ – 3 PHASE

L07			B/M 335KBA4004	B/M: 336KBA4004	B/M: 337KBA4004	B/M: 337KBA4004
DESCRIPTION	ITEM	QTY.	110PSI	130PSI	145PSI	190PSI
MOTOR PULLEY	1	1	100003073	100003073	100003071	100003071
AIREND PULLEY	3	1	100003079	100003080	100004023	100004023
BELT	5	2	ZS1059040	ZS1059033	ZS1059033	ZS1059033

L07 – 50Hz			B/M 300VBA4004	B/M: 301VBA4004	B/M: 303VBA4004	B/M: 303VBA4004
DESCRIPTION	ITEM	QTY.	110PSI	130PSI	145PSI	190PSI
MOTOR PULLEY	1	1	100003075	100003075	100003073	100003073
AIREND PULLEY	3	1	100003079	100003080	100003080	100003080
BELT	5	2	ZS1059031	ZS1092648	ZS1059033	ZS1059033

L11			B/M 338KBA4004	B/M: 339KBA4004	B/M: 340KBA4004	B/M: 340KBA4004
DESCRIPTION	ITEM	QTY.	110PSI	130PSI	145PSI	190PSI
MOTOR PULLEY	1	1	100003075	100003075	100003081	100003081
AIREND PULLEY	3	1	ZS1048413	100003078	100003075	100003075
BELT	5	2	ZS1059041	ZS1059042	ZS1059032	ZS1059032

L11 – 50Hz			B/M 304VBA4004	B/M: 305VBA4004	B/M: 307VBA4004	B/M: 307VBA4004
DESCRIPTION	ITEM	QTY.	110PSI	130PSI	145PSI	190PSI
MOTOR PULLEY	1	1	A11600574	A11600574	A11600574	A11600574
AIREND PULLEY	3	1	ZS1048413	100003078	100003081	100003081
BELT	5	2	ZS1059036	ZS1059036	ZS1059039	ZS1059039

MAIN MOTOR

Description	10HP (VSD,132FRM), 3PH Part No.	15HP (VSD,132FRM), 3PH Part No.
208-230/460 . 60HZ	24CA7599	24CA7603
380V-60HZ	24CA7600	24CA7604
575V-60HZ	24CA7601	24CA7605

TANK

TANK SIZE	STANDARD	VINYL COAT
80 GALLON	300ELA645	300ELA645V
120 GALLON	301ELA645	301ELA645V
240 GALLON	302ELA645	302ELA645V

DRYER TYPE

DRYER TYPE	10HP	15HP
DRYER WITH FILTER	CRN50A2C1N1	CRN75A2C1N1
DRYER WITH COLD COALESCER	CRN50A2C1N1F	CRN75A2C1N1F
DRYER WITH FILTER	CRN50A4C1N1	CRN75A4C1N1
DRYER WITH COLD COALESCER	CRN50A4C1N1F	CRN75A4C1N1F
REFRIGERATED AIR DRYER	GSRN50A1CH	GSRN75A1CH

REPAIR KITS

Your Gardner Denver rotary screw compressor is designed and manufactured for many years of reliable operation. All components are engineered to exacting specifications, which will function together as a system to provide maximum efficiency. To insure the continuing integrity of compressor operation, use only original quality genuine Gardner Denver replacement parts and accessories.

Name of Part	Qty.	Part No.
KIT-WARRANTY (CHAMPION L-SERIES FRAME 1)		304KBA6032
AIR FILTER ELEMENT.....	2	300KBA1445
OIL FILTER ELEMENT.....	2	300KBA1446
AIR/OIL SEPARATOR.....	1	300KBA035
PRE-FILTER.....	2	100002376
OIL SAMPLE KIT.....	2	1308KBA6003

REPAIR KITS

Your Gardner Denver rotary screw compressor is designed and manufactured for many years of reliable operation. All components are engineered to exacting specifications, which will function together as a system to provide maximum efficiency. To insure the continuing integrity of compressor operation, use only original quality genuine Gardner Denver replacement parts and accessories.

Name of Part	Qty.	Part No.
SERVICE KIT		GM0711-1
MINIMUM PRESSURE VALVE	1	ZS1046882
INLET VALVE	1	A11853074
PIPE SEAL R. 78X2.....	1	A93191640
PIPE SEAL R. 57X2.....	1	A93191650
LOCKING SCREW M36.....	1	A11852774
LOCKING SCREW G1/2	1	A93060480
THERMOSTAT INSERT (55°)	1	A11203274
THERMOSTAT INSERT (70°)	1	A11484474
VOLTAGE CONVERSION KIT, L7 460V TO 208-230V	1	302ECA6005
MARKER-VOLTAGE 208 VOLT.....	1	69F111
MARKER-VOLTAGE 230 VOLT.....	1	69F112
FUSE 0.2 AMP	2	24CA2781
OVERLOAD RLY.....	1	24CA7862
VOLTAGE CONVERSION KIT, L11 460V TO 208-230V	1	303ECA6005
MARKER-VOLTAGE 208 VOLT.....	1	69F111
MARKER-VOLTAGE 230 VOLT.....	1	69F112
FUSE 0.2 AMP	2	24CA2781
OVERLOAD RLY.....	1	24CA7867
VOLTAGE CONVERSION KIT, L7 208-230V TO 460V	1	304ECA6005
MARKER-VOLTAGE 460 VOLT.....	1	69F113
FUSE 1 AMP.....	2	24CA2779
OVERLOAD RLY.....	1	24CA7861
VOLTAGE CONVERSION KIT, L11 208-230V TO 460V	1	305ECA6005
MARKER-VOLTAGE 460 VOLT.....	1	69F113
FUSE 1 AMP	2	24CA2779
OVERLOAD RLY.....	1	24CA7866

REPAIR KITS (CONTINUED)

Name of Part	Qty.	Part No.
LUBRICANT (ROTORLUB 4000)		
1-GALLON PAIL	1	28H238
5-GALLON PAIL	1	28H166
55-GALLON DRUM	1	28H167
LUBRICANT (ROTORLUB 8000)		
1-GALLON PAIL	1	28H247
5-GALLON PAIL	1	28H164
55-GALLON DRUM	1	28H165
LUBRICANT (ROTORLUB 8000TH)		
1-GALLON PAIL	1	28H292
5-GALLON PAIL	1	28H294
55-GALLON DRUM	1	28H295
LUBRICANT (ROTORLUB 4000FG)		
1-GALLON PAIL	1	28H241
5-GALLON PAIL	1	28H168
55-GALLON DRUM	1	28H169
LUBRICANT (ROTORLUB 4000FG-68)		
1-GALLON PAIL	1	28H367
5-GALLON PAIL	1	28H317
55-GALLON DRUM	1	28H318
TOUCH-UP PAINT		
1-GALLON PAIL (WHITE).....	1	28H84
1-QUART CAN (WHITE).....	1	28H83
5-GALLON PAIL (WHITE).....	1	28H76
1-GALLON PAIL (RED)	1	28H324
1-QUART CAN (RED).....	1	28H323
5-GALLON PAIL (RED)	1	28H325
1-GALLON PAIL (BLACK)	1	28H395
1-QUART CAN (BLACK).....	1	28H397
5-GALLON PAIL (BLACK)	1	28H337

CHAMPION[®]

For additional information, contact your local representative or visit:
www.championpneumatic.com/contactus.aspx

©2018 Champion, Inc. Printed in U.S.A.



Member

